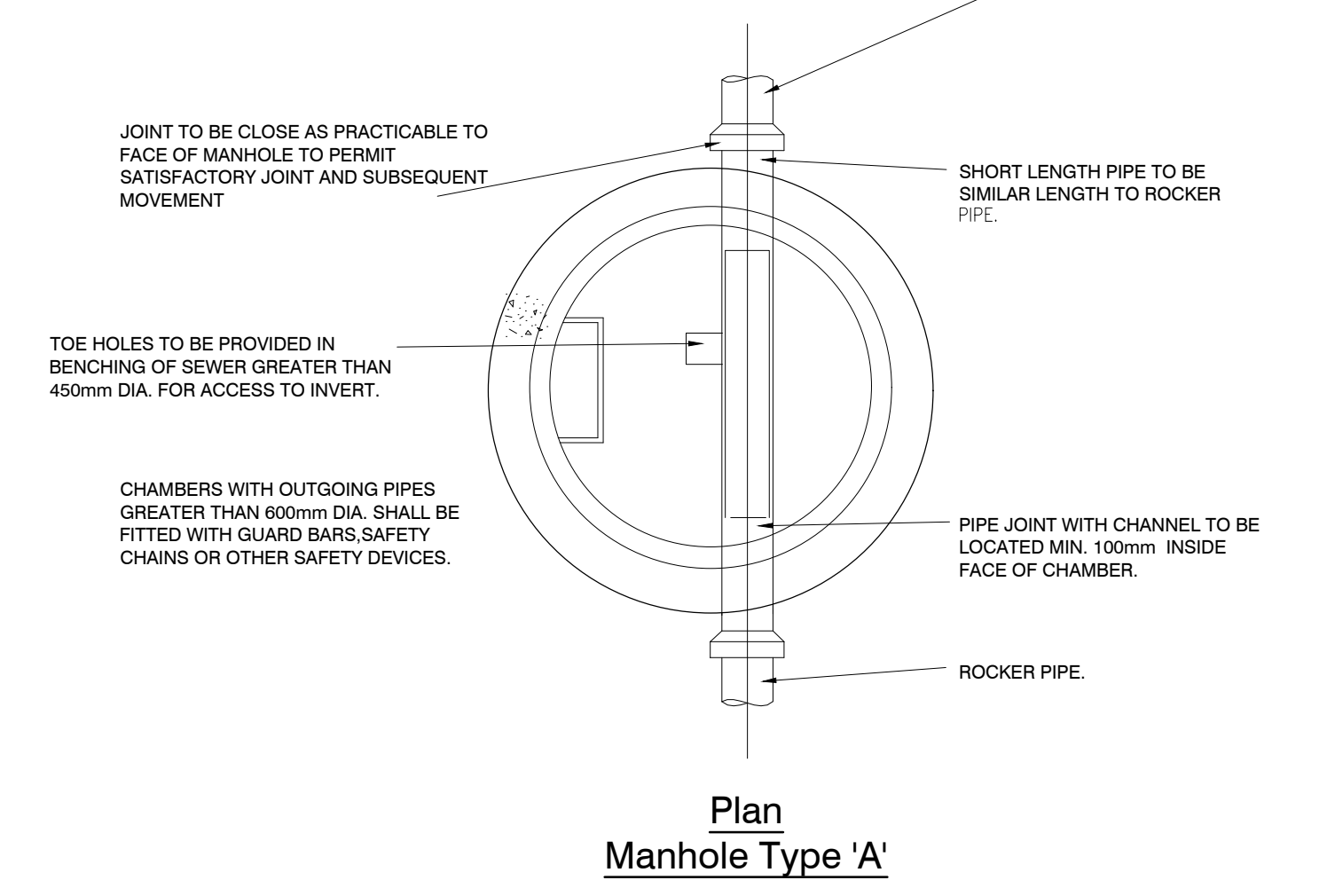
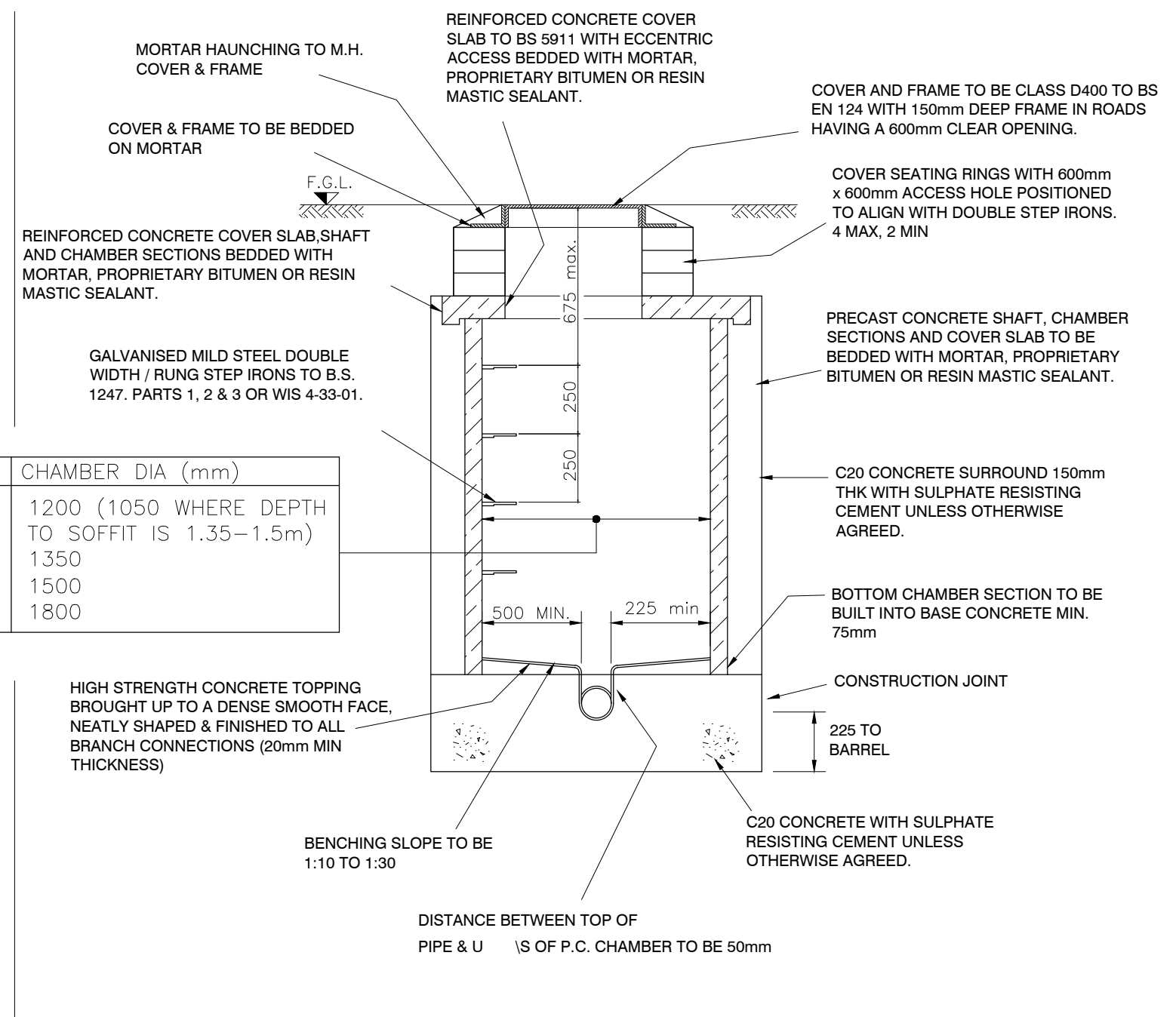


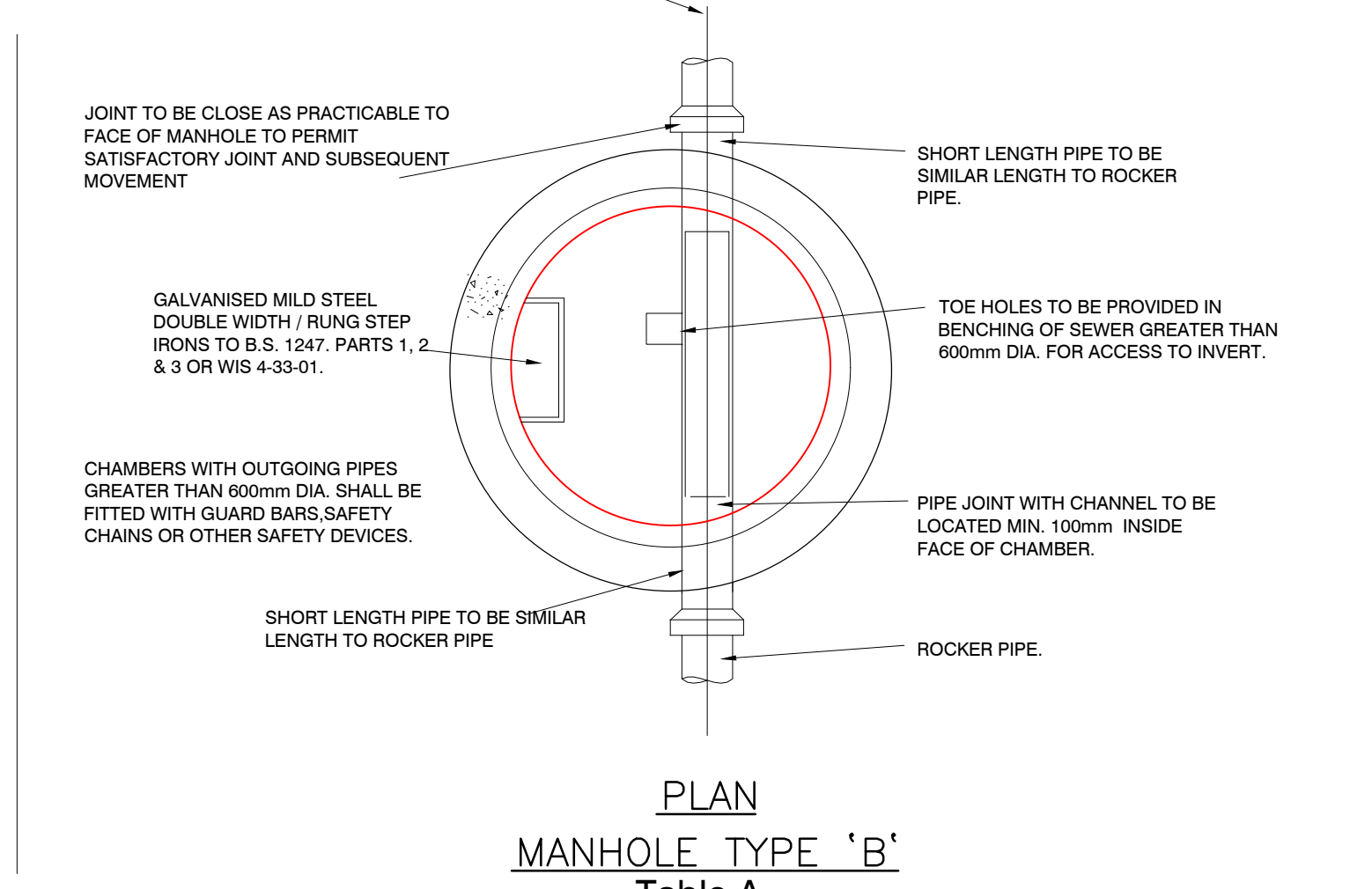
Type 'A' Manhole Detail
Depth From Ground Level To Soffit Of Pipe 3m to 6m



Plan Manhole Type 'A'



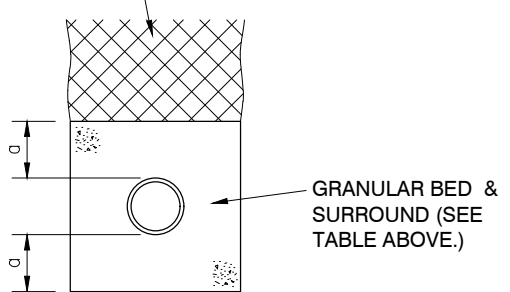
Type 'B' Manhole Detail
Max Depth From Ground Level To Soffit Of Pipe 3m



PLAN MANHOLE TYPE 'B'

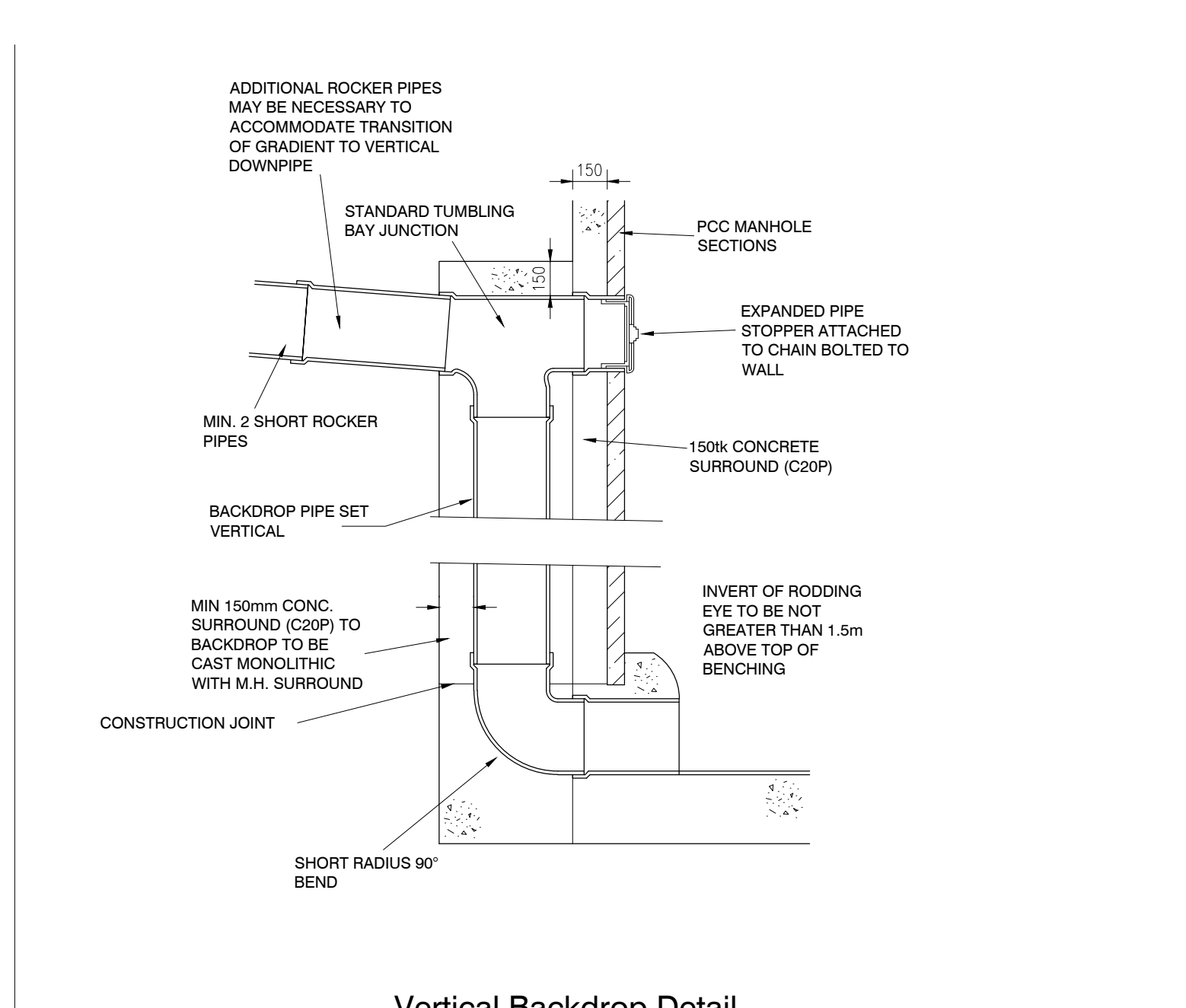
PIPE NOMINAL BORE (DN)	MAX. PARTICLE SIZE (mm)	CLASS OF BEDDING	SUITABLE IMPORTED GRANULAR MATERIALS
OVER 100 TO 150 dia	15	S	10mm OR 14mm NOMINAL SINGLE-SIZED OR 14mm TO 5mm GRADED.
OVER 150 TO 500dia	20	S	10, 14 OR 20mm NOMINAL SINGLE-SIZED OR 14mm TO 5mm GRADED OR 20mm TO 5mm GRADED.
OVER 500	40	S	10, 14, 20 OR 40mm NOMINAL SINGLE-SIZED CRUSHED ROCK OR 14mm TO 5mm GRADED OR 20mm TO 5mm GRADED OR 40mm TO 5mm GRADED.

UNDER ALL HARDSTANDING AREAS BACKFILL WITH 40mm DOWN GRADED STONE - HARD-CORE. ELSEWHERE (IN SOFT LANDSCAPED AREAS) BACKFILL WITH APPROVED SELECTED MATERIAL.

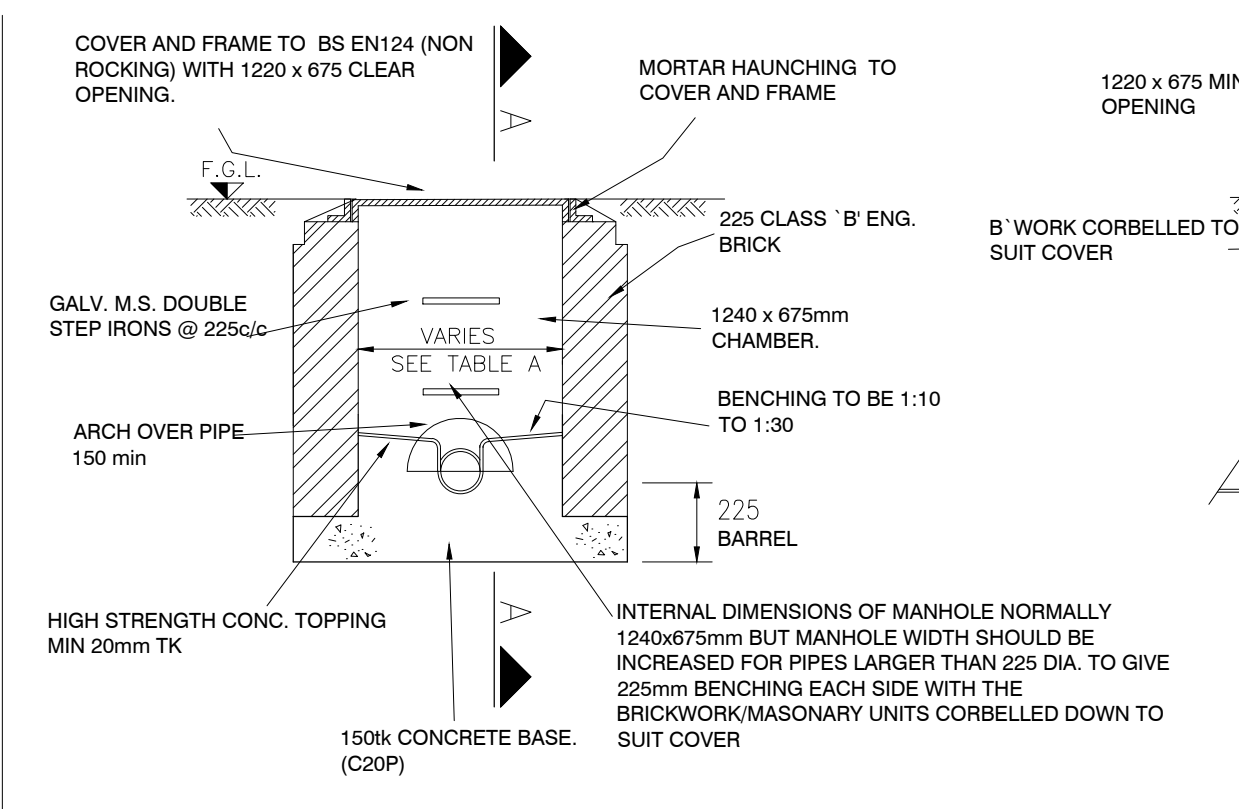


Class 'S' Pipe Bedding Detail

DIMENSION a - IN ROCK OR MATERIAL CONTAINING HARD SPOTS SLEEVED JOINTED PIPES - 150mm MIN. SOCKETED PIPES - 200mm MIN. ELSEWHERE SLEEVED JOINTED PIPES - 100mm MIN. SOCKETED PIPES - 100mm MIN.

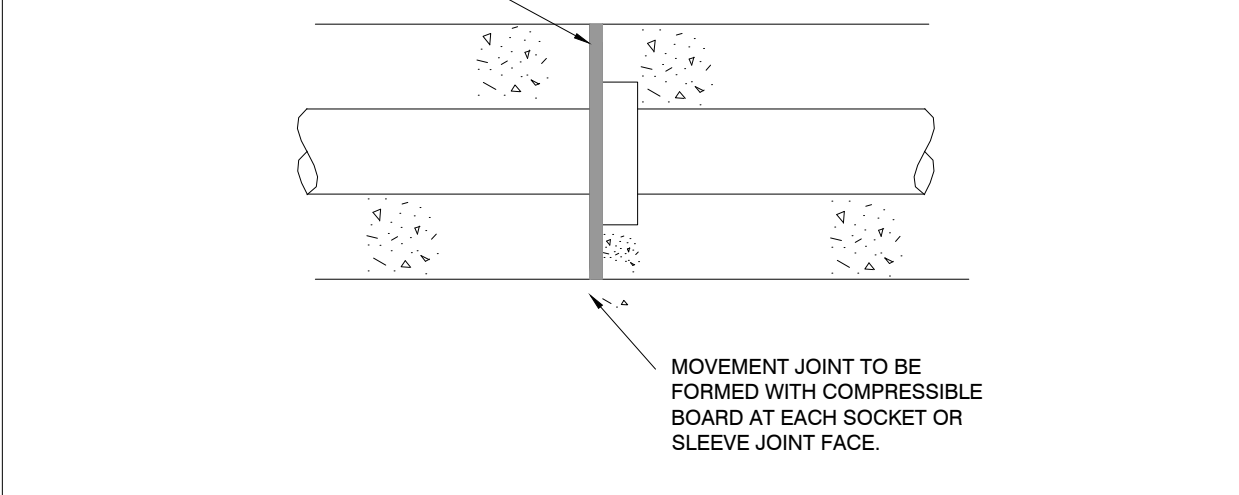


Vertical Backdrop Detail

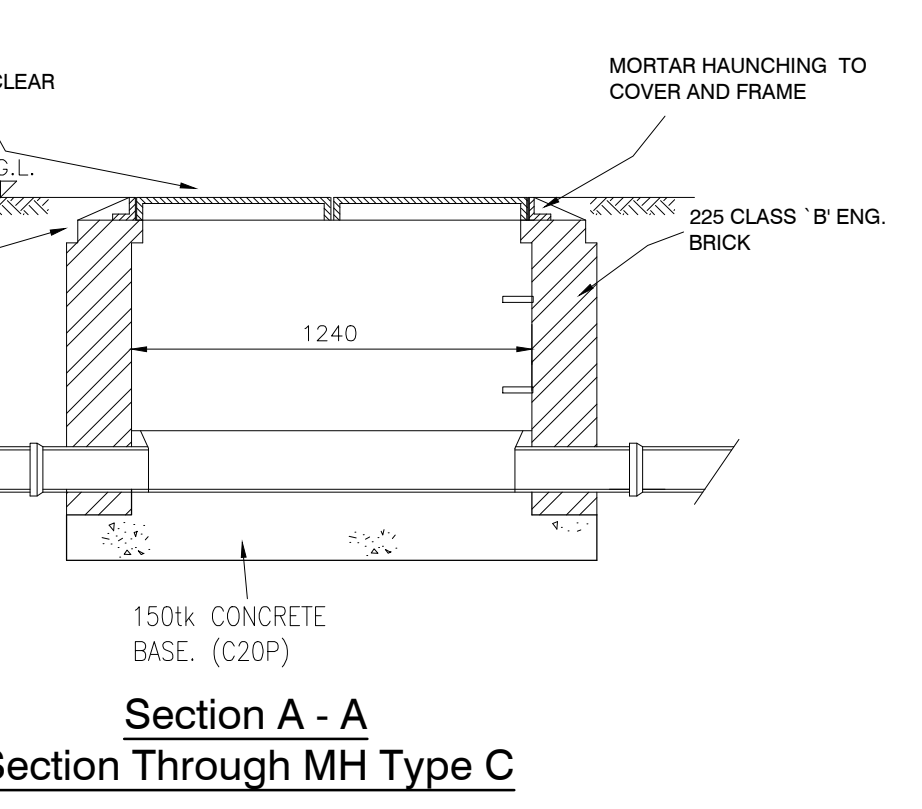


Type 'C' Manhole Detail
Max Depth From Ground Level To Soffit Of Pipe 1.45m

NOMINAL DIA OF PIPE (mm)	THICKNESS OF COMPRESSIBLE FILLER (mm)
LESS THAN 450	18
450-1200	36
EXCEEDING 1200	54



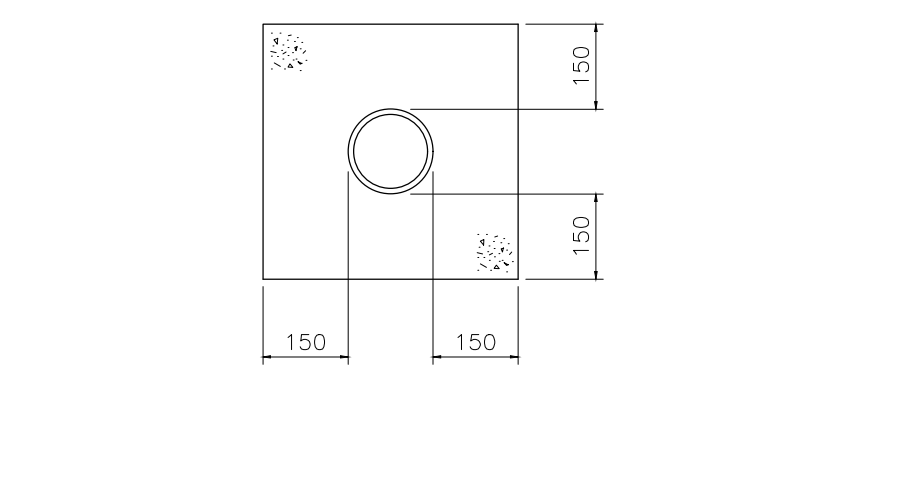
MOVEMENT JOINT TO CONCRETE PIPE SURROUND



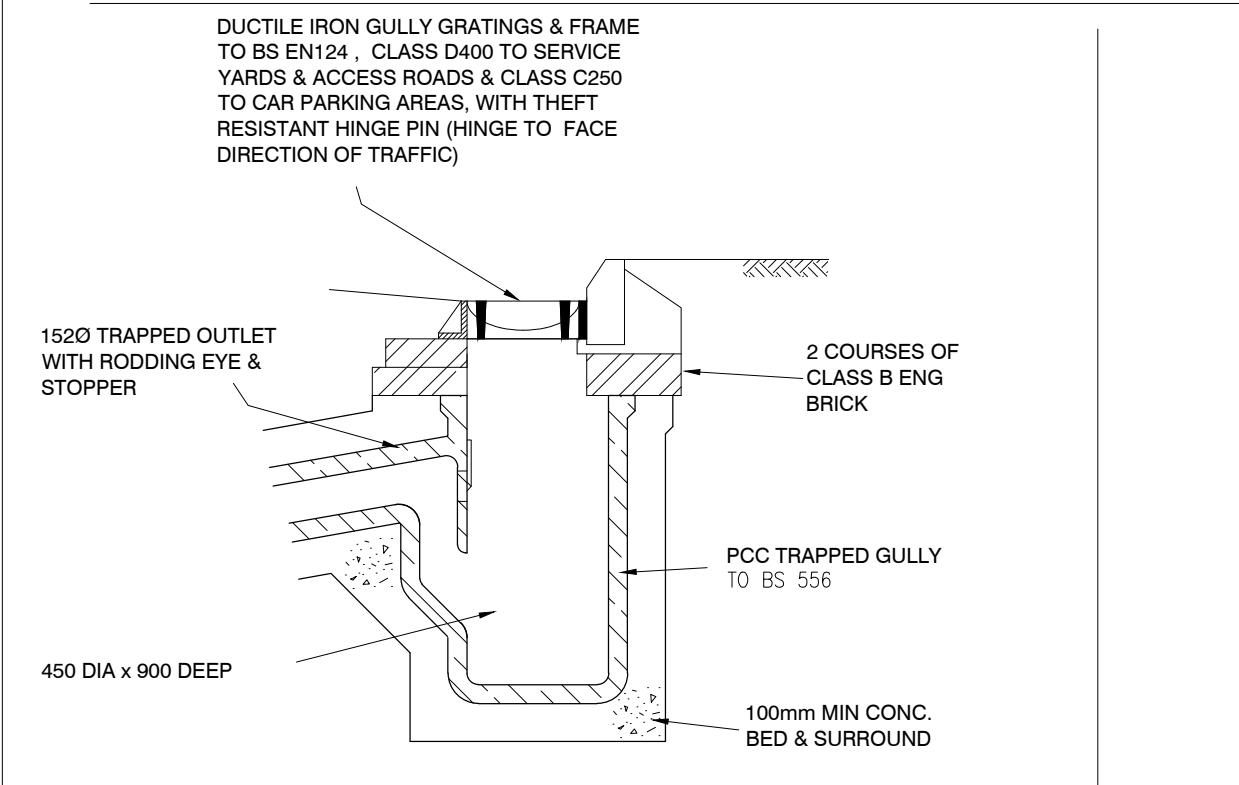
PIPE DIA.	INTERNAL MANHOLE SIZE	CORBELL DETAILS
UPTO 225	1240x675	NOT REQUIRED
300	1240x750	2 BRICK CORBELL
375	1240x825	3 BRICK CORBELL
450	1240x900	3 BRICK CORBELL

MAX. BRICK CORBELL PER COURSE TO BE 38mm

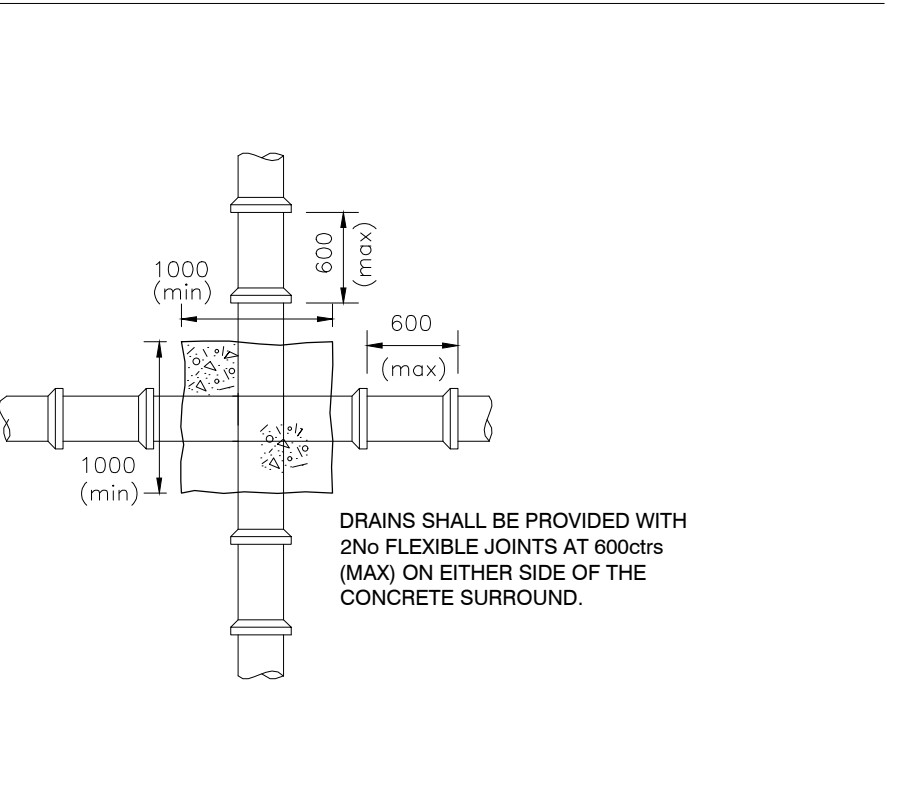
Table A



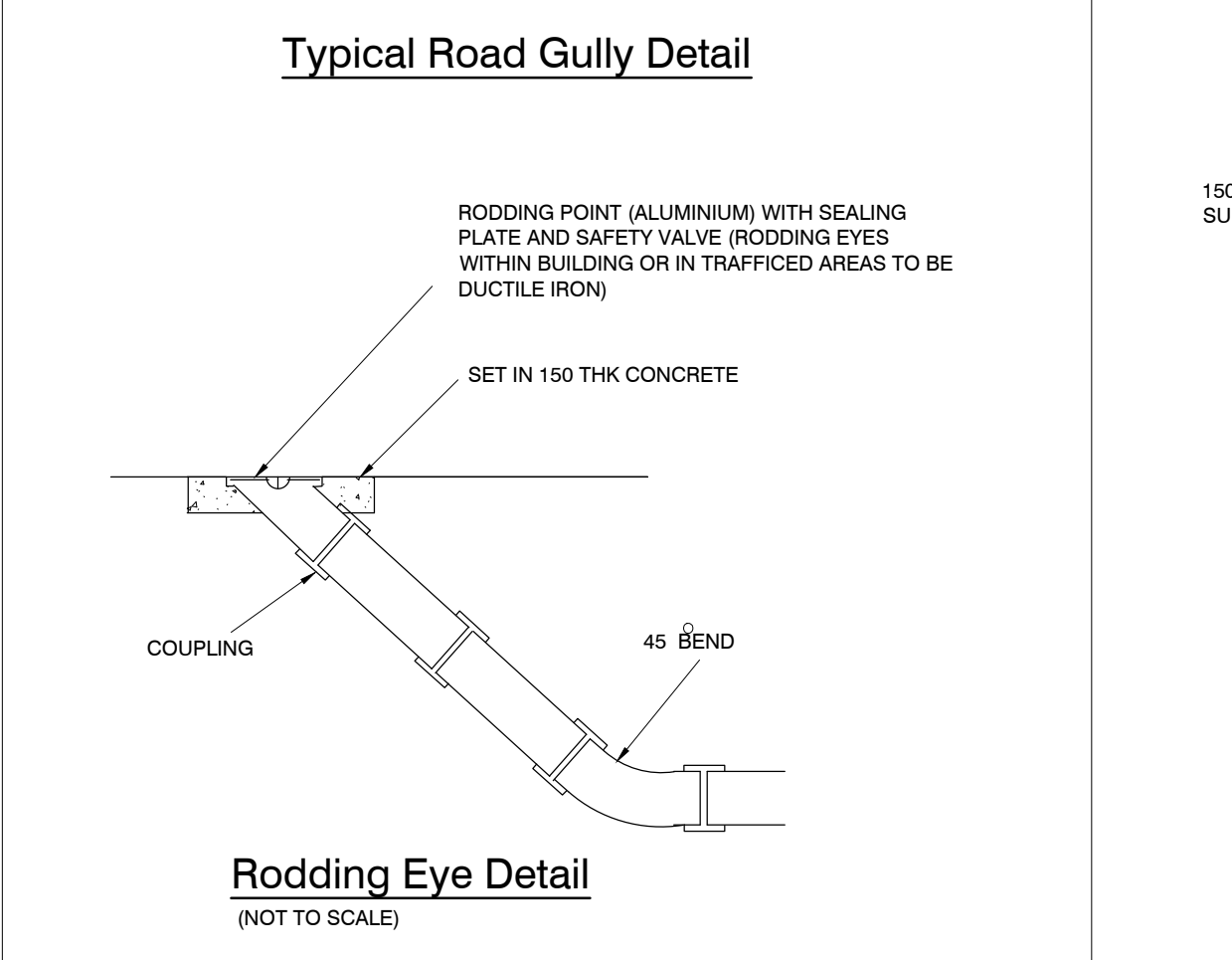
TYPICAL CONCRETE PIPE SURROUND DETAIL



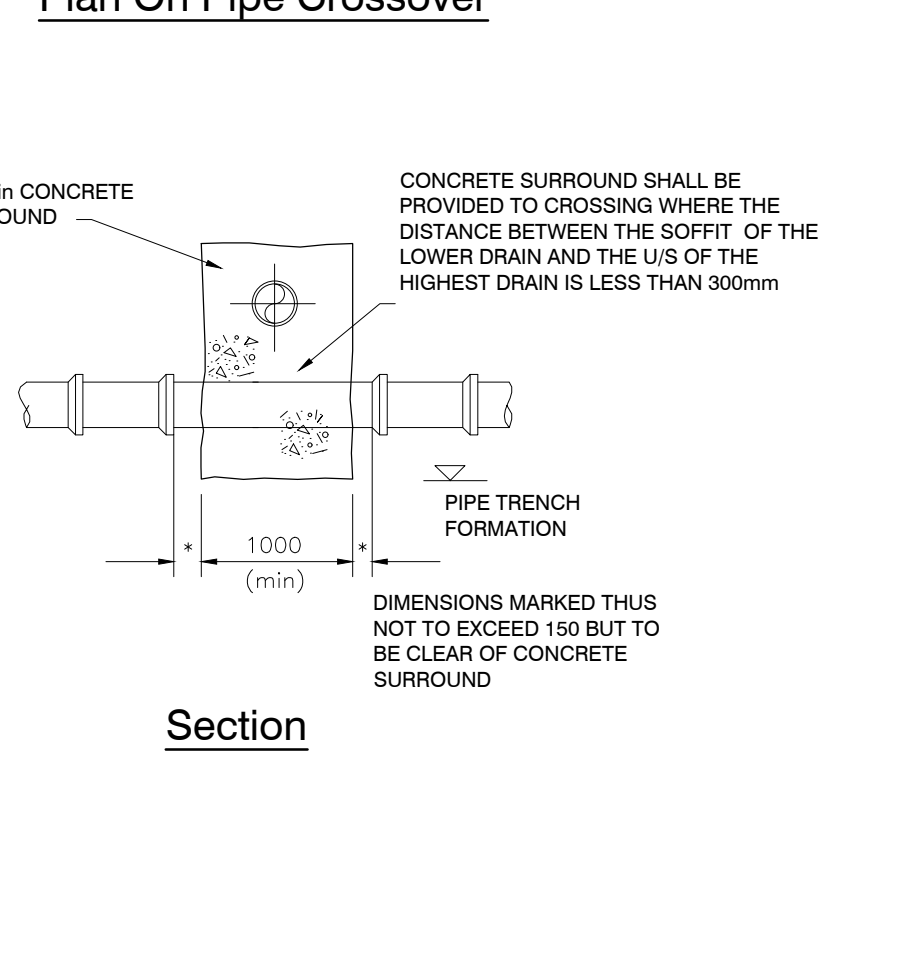
Typical Road Gully Detail



Plan On Pipe Crossover



Rodding Eye Detail
(NOT TO SCALE)



Section

DO NOT SCALE FROM THIS DRAWING

GENERAL

- These notes are intended to augment drawings and specifications. Where conflict of requirements exists the order of precedence shall be as shown in the specifications. Otherwise the strictest provision shall govern.
- This drawing is to be read in conjunction with all other relevant Engineers and Architects drawings.
- Drawings not to be scaled. All dimensions to be checked on site by the Contractor prior to the commencement of any work or stop drawing. Any discrepancies to be notified to the Architect & Engineer and further instructions obtained before work is commenced.

DRAINAGE NOTES

- Invert of foul and surface water inspection chambers to be min 600mm below FFL.
- Covers HD in road, MD in paths and landscaped areas.
- All branches from stacks 100mm O.
- All inspection chambers 450mm O with 450mm covers.
- Manholes generally to be 1200x750 or 1050 O with 600x600 or 600 O covers except manholes between 1.5 & 2.7m deep which are to be minimum 1200mm O.
- Ground floor ensuite shower and bath connections made below floor into nearest run min. 200mm downstream using 135 branch pipe. Trap to be demountable for rodding.
- RWP to discharge into roddable access gullies compatible.
- Gullies in hardstanding to be Hepworth semi-universal-square top (200m² capacity).
- Ensure trap is fitted on laundry installation (separate connection).
- Drain runs in the car park area to be surrounded in minimum 150mm pea gravel giving class 3 bedding factor 2.5.
- All soil stacks to be vented - those marked SVP are taken through the roof and vented to air, all other to be fitted with Agreement Certified Air Admittance Valves.
- Invert levels, pipe diameters, gradients, and connection points associated with petrol interceptors, storage and infiltration areas to be specified by Subcontractor.
- Rocker pipes are to be fitted at each side of any pipes penetrating walls or relieving lintels are to be provided.
- See project specification for further information.
- 1500 drains assume 1:150 unless stated.
- 1000 drains assume 1:80 unless stated.
- Kitchen wastes connected to above floor grease trap and then into soil stack.
- Where manhole/inspection chamber covers are located in paved or block paved areas, then covers need to be recessed to accept paving type.

DRAWING REVISIONS

REV	DESCRIPTION	DATE	BY	CHK

AFA CONSULTING ENGINEERS LTD

AFA Consulting Engineers Ltd
29 Acorns Court,
Front St,
Accomb,
York
YO24 3BJ
admin@afa-eng.co.uk

CLIENT
Lawrence Baker

PROJECT
Care Home Development, Morningside Farm,
Icknield Way, Tring,

DRAWING TITLE
Drainage Details

DRAWING STATUS
FOR COMMENT

SCALE	DATE
1:50 @ A1	Jan 2024

DRAWN BY	CHECKED BY
GB	SS

JOB NO.	DWG NO.	REV
0001	SL(5)501	-



DO NOT SCALE FROM THIS DRAWING

GENERAL

1. These notes are intended to augment drawings and specifications. Where conflict of requirements exists the order of precedence shall be as shown in the specifications. Otherwise the strictest provision shall govern.
2. This drawing is to be read in conjunction with all other relevant Engineers and Architects drawings.
3. Drawings not to be scaled. All dimensions to be checked on site by the Contractor prior to the commencement of any work or shop drawing. Any discrepancies to be notified to the Architect & Engineer and further instructions obtained before work is commenced.

DRAINAGE NOTES

1. Invert of foul and surface water inspection chambers to be min 600mm below FFL.
2. Covers HD in road, MD in paths and landscaped areas.
3. All branches from stacks 100mm Ø.
4. All inspection chambers 450mm Ø with 450mm covers.
5. Manholes generally to be 1200x750 or 1050 Ø with 600x600 or 600 Ø covers except manholes between 1.5 & 2.7m deep which are to be minimum 1200mm Ø.
6. Ground floor ensuite shower and bath connections made below floor into nearest run min. 2000mm downstream using 135 branch pipe. Trap to be removable for rodding.
7. RWP to discharge into roddable access gullies compatible.
8. Gullies in hardstanding to be Hepworth semi-universal-square top (200m² capacity).
9. Ensure trap is fitted on laundry installation (separate connection).
10. Drain runs in the car park area to be surrounded in minimum 150mm pea gravel giving class s bedding factor 2.5.
11. All soil stacks to be vented - those marked SVP are taken through the roof and vented to air - all other to be fitted with Agreement Certified Air Admittance Valves.
12. Invert levels, pipe diameters, gradients, and connection points associated with petrol interceptors, storage and infiltration areas to be specified by Subcontractor.
13. Rocker pipes are to be fitted at each side of any pipes penetrating walls or relieving intells are to be provided.
14. See project specification for further information.
15. 1500 drains assume 1:150 unless stated
16. 1000 drains assume 1:80 unless stated
17. Kitchen wastes connected to above floor grease trap and then into soil stack.
18. Where manhole/inspection chamber covers are located in paved or block paved areas, then covers need to be recessed to accept paving type.

DRAWING REVISIONS

REV	DESCRIPTION	DATE	BY	CHK



AFA Consulting Engineers Ltd
 2a Acorn Court,
 Forest St,
 York
 YO24 3BU
 admin@afaweg.co.uk

CLIENT
 Lawence Baker

PROJECT
 Care Home Development, Morningside Farm,
 Icknield Way, Tring,

DRAWING TITLE
 Proposed Impermeable Area

DRAWING STATUS
FOR COMMENT

SCALE 1:200 @ A1	DATE Jan 2024
DRAWN BY GB	CHECKED BY SS
JOB NO 0001	DWG NO SL(5)510
	REV -



DO NOT SCALE FROM THIS DRAWING

GENERAL

1. These notes are intended to augment drawings and specifications. Where conflict of requirements exists the order of precedence shall be as shown in the specifications. Otherwise the strictest provision shall govern.
2. This drawing is to be read in conjunction with all other relevant Engineers and Architects drawings.
3. Drawings not to be scaled. All dimensions to be checked on site by the Contractor prior to the commencement of any work or shop drawing. Any discrepancies to be notified to the Architect & Engineer and further instructions obtained before work is commenced.

DRAINAGE NOTES

1. Invert of foul and surface water inspection chambers to be min 600mm below FFL.
2. Covers HD in road, MD in paths and landscaped areas.
3. All branches from stacks 100mm Ø.
4. All inspection chambers 450mm Ø with 450mm covers.
5. Manholes generally to be 1200x750 or 1050 Ø with 600x600 or 600 Ø covers except manholes between 1.5 & 2.7m deep which are to be minimum 1200mm Ø.
6. Ground floor ensuite shower and bath connections made below floor into nearest run min. 2000mm downstream using 135 branch pipe. Trap to be removable for rodding.
7. RWP to discharge into roddable access gullies compatible.
8. Gullies in hardstanding to be Hepworth semi-universal-square top (200m² capacity).
9. Ensure trap is fitted on laundry installation (separate connection).
10. Drain runs in the car park area to be surrounded in minimum 150mm pea gravel giving class s bedding factor 2.5.
11. All soil stacks to be vented - those marked SVP are taken through the roof and vented to air - all other to be fitted with Agreement Certified Air Admittance Valves.
12. Invert levels, pipe diameters, gradients, and connection points associated with petrol interceptors, storage and infiltration areas to be specified by Subcontractor.
13. Rocker pipes are to be fitted at each side of any pipes penetrating walls or relieving intells are to be provided.
14. See project specification for further information.
15. 1500 drains assume 1:150 unless stated
16. 1000 drains assume 1:80 unless stated
17. Kitchen wastes connected to above floor grease trap and then into soil stack.
18. Where manhole/inspection chamber covers are located in paved or block paved areas, then covers need to be recessed to accept paving type.

DRAWING REVISIONS

REV	DESCRIPTION	DATE	BY	CHK



AFA Consulting Engineers Ltd
 2a Acorn Court,
 Fines St,
 York
 YO24 3BU
 admin@afaweng.co.uk

CLIENT

Lawrence Baker

PROJECT

Care Home Development, Morningside Farm,
 Icknield Way, Tring,

DRAWING TITLE

Proposed Flood Exceedence Routing

DRAWING STATUS

FOR COMMENT

SCALE	DATE	
1:200 @ A1	April 2024	
DRAWN BY	CHECKED BY	
GB	SS	
JOB NO	DWG NO	REV
0001	SL(5)511	-

Key
 Flood Exceedence Routing