

LAND EAST OF COLCHESTER ROAD,
WELLWICK

LANDSCAPE AND VISUAL IMPACT
ASSESSMENT

Figure 9

December 2023 (revised March 2024)

Figure 9 Photographic Sheets 1 to 37

Oaklands Holiday Park



Contextual Site Photo A: View looking east, taken from within the north western corner of the Site

Nothern Site boundary

Lodges at
Wellwick Farm Leisure Park

Residential edge of St Osyth

Retained pond within consented scheme

Tower at St Osyth Priory



Contextual Site Photo B: View looking south, taken from within the north western corner of the Site

Retained pond within consented scheme

Vegetation on western boundary

Vegetation associated with
Oaklands Holiday Park



Contextual Site Photo C: View looking south west taken from within the Site

Oaklands Holiday Park

Northern Site boundary

Buildings at Wellwick Farm

Lodges at
Wellwick Farm Leisure Park

Residential edge at St Osyth

Access road under construction



Contextual Site Photo D: View looking south east taken from within the Site

Lodges at
Wellwick Farm Leisure Park

Lamb Farm



Contextual Site Photo E: View looking south, taken from within the eastern part of the Site

Retained pond within
consented scheme

Approximate location of
southern boundary

Vegetation on
western site Boundary

Northern Site boundary

Oaklands Holiday Park



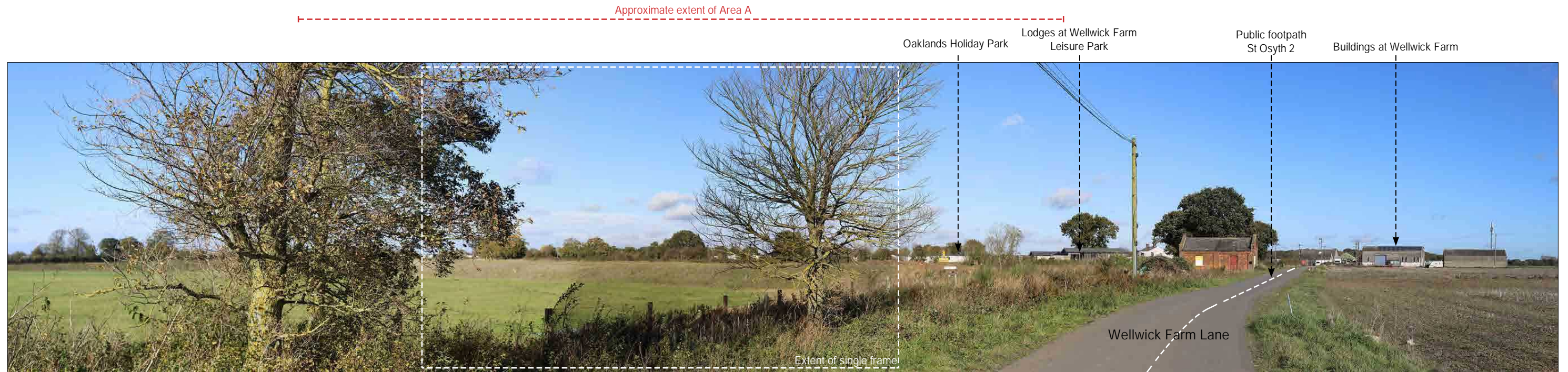
Contextual Site Photo F: View looking north west, taken from the western Site boundary



Contextual panorama

Visualisation Type: Type 1
Date: 07/11/2023
Time: 11:39
Looking direction: North west
Projection: Cylindrical
Camera: Canon 6D FFS
Focal length: 50mm
HFOV (for single frame): 39.6 degrees
Enlargement Factor: 150% @ A3





Contextual panorama

Visualisation Type: Type 1
Date: 07/11/2023
Time: 11:38
Looking direction: North west
Projection: Cylindrical
Camera: Canon 6D FFS
Focal length: 50mm
HfOV (for single frame): 39.6 degrees
Enlargement Factor: 150% @ A3

LANDSCAPE ARCHITECTS



Approximate extent of Area A

Public footpath St Osyth 2

Lodges at Wellwick Farm
Leisure Park

Wellwick Farm house



Contextual panorama

Visualisation Type: Type 1
Date: 07/11/2023
Time: 11:06
Looking direction: South west
Projection: Cylindrical
Camera: Canon 6D FFS
Focal length: 50mm
HFOV (for single frame): 39.6 degrees
Enlargement Factor: 150% @ A3

LANDSCAPE ARCHITECTS

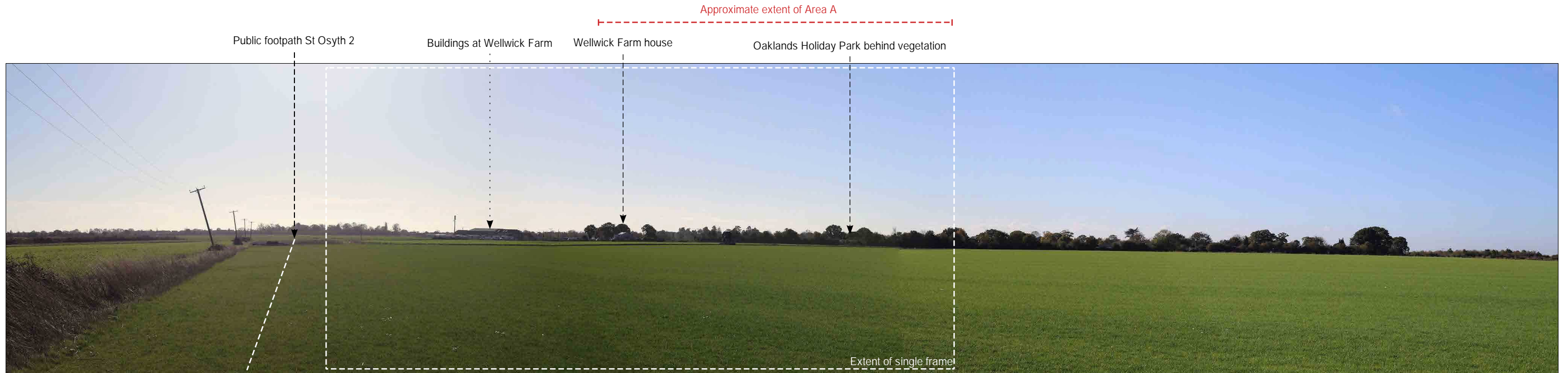




Contextual panorama

Visualisation Type: Type 1
Date: 07/11/2023
Time: 11:11
Looking direction: South west
Projection: Cylindrical
Camera: Canon 6D FFS
Focal length: 50mm
HFOV (for single frame): 39.6 degrees
Enlargement Factor: 150% @ A3





Contextual panorama

Visualisation Type: Type 1
Date: 07/11/2023
Time: 11:20
Looking direction: South west
Projection: Cylindrical
Camera: Canon 6D FFS
Focal length: 50mm
HFOV (for single frame): 39.6 degrees
Enlargement Factor: 150% @ A3





Contextual panorama

Visualisation Type: Type 1
Date: 07/11/2023
Time: 12:34
Looking direction: South west
Projection: Cylindrical
Camera: Canon 6D FFS
Focal length: 50mm
HfOV (for single frame): 39.6 degrees
Enlargement Factor: 150% @ A3



Approximate extent of Area A

Vegetation on western boundary of consented scheme

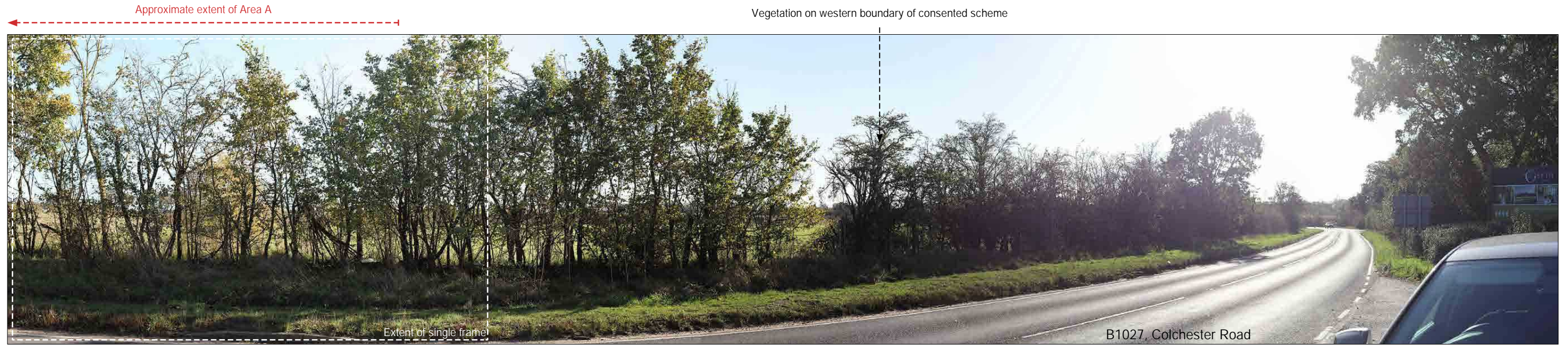


Contextual panorama

Visualisation Type: Type 1
Date: 07/11/2023
Time: 11:43
Looking direction: East
Projection: Cylindrical
Camera: Canon 6D FFS
Focal length: 50mm
HFOV (for single frame): 39.6 degrees
Enlargement Factor: 150% @ A3

LANDSCAPE ARCHITECTS





Contextual panorama

Visualisation Type: Type 1
Date: 07/11/2023
Time: 11:44
Looking direction: East
Projection: Cylindrical
Camera: Canon 6D FFS
Focal length: 50mm
HFOV (for single frame): 39.6 degrees
Enlargement Factor: 150% @ A3

LANDSCAPE ARCHITECTS



Approximate extent of Area A

Public footpath St Osyth 19

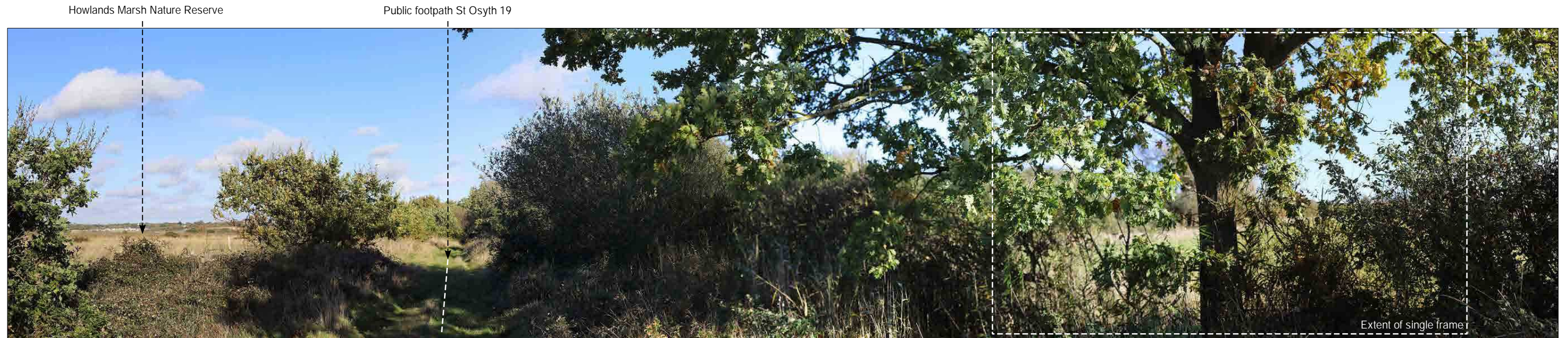


Contextual panorama

Visualisation Type: Type 1
Date: 07/11/2023
Time: 12:23
Looking direction: East
Projection: Cylindrical
Camera: Canon 6D FFS
Focal length: 50mm
HFOV (for single frame): 39.6 degrees
Enlargement Factor: 150% @ A3

LANDSCAPE ARCHITECTS





Contextual panorama

Visualisation Type: Type 1
Date: 07/11/2023
Time: 12:00
Looking direction: North east
Projection: Cylindrical
Camera: Canon 6D FFS
Focal length: 50mm
HFOV (for single frame): 39.6 degrees
Enlargement Factor: 150% @ A3

LANDSCAPE ARCHITECTS





Contextual panorama

Visualisation Type: Type 1
Date: 07/11/2023
Time: 12:18
Looking direction: South east
Projection: Cylindrical
Camera: Canon 6D FFS
Focal length: 50mm
HfOV (for single frame): 39.6 degrees
Enlargement Factor: 150% @ A3



Approximate extent of Area A



Contextual panorama

Visualisation Type: Type 1
Date: 07/11/2023
Time: 14:30
Looking direction: South east
Projection: Cylindrical
Camera: Canon 6D FFS
Focal length: 50mm
HFOV (for single frame): 39.6 degrees
Enlargement Factor: 150% @ A3

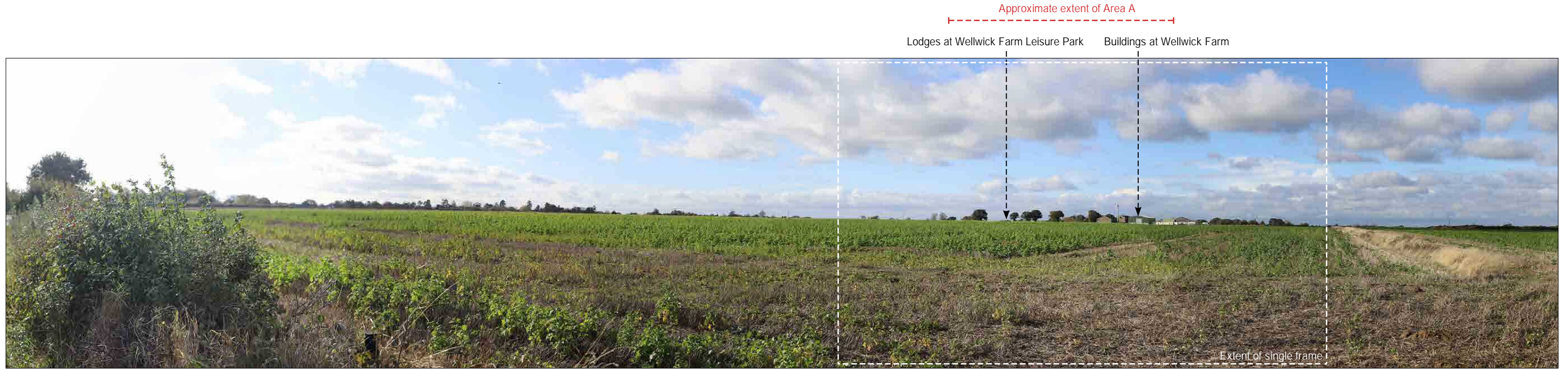




Contextual panorama

Visualisation Type: Type 1
Date: 07/11/2023
Time: 13:12
Looking direction: North west
Projection: Cylindrical
Camera: Canon 6D FFS
Focal length: 50mm
HFOV (for single frame): 39.6 degrees
Enlargement Factor: 150% @ A3





Contextual panorama

Visualisation Type: Type 1
Date: 07/11/2023
Time: 12:49
Looking direction: West
Projection: Cylindrical
Camera: Canon 6D FFS
Focal length: 50mm
HfOV (for single frame): 39.6 degrees
Enlargement Factor: 150% @ A3



Approximate extent of Area A

Park Hall Hotel

Buildings at Park Farm



Contextual panorama

Visualisation Type: Type 1
Date: 07/11/2023
Time: 13:42
Looking direction: North west
Projection: Cylindrical
Camera: Canon 6D FFS
Focal length: 50mm
HFOV (for single frame): 39.6 degrees
Enlargement Factor: 150% @ A3



Public footpath St Osyth 16

Approximate extent of Area A

Frowick Hall Farm



Contextual panorama

Visualisation Type: Type 1
Date: 07/11/2023
Time: 13:02
Looking direction: South
Projection: Cylindrical
Camera: Canon 6D FFS
Focal length: 50mm
HFOV (for single frame): 39.6 degrees
Enlargement Factor: 150% @ A3

LANDSCAPE ARCHITECTS



Residential properties on Creekhurst Close

Residential properties on Pannell Place

Approximate extent of Area A



Contextual panorama

Visualisation Type: Type 1
Date: 07/11/2023
Time: 14:58
Looking direction: East
Projection: Cylindrical
Camera: Canon 6D FFS
Focal length: 50mm
HFOV (for single frame): 39.6 degrees
Enlargement Factor: 150% @ A3

