

APARTMENT BLOCK 2 - PLOTS 7-12

APARTMENT TYPE 'E' (Plots 7, 8, 9)
 2-BED APARTMENT
 61.80m² / 665ft²

APARTMENT TYPE 'F' (Plots 10, 11, 12)
 2-BED APARTMENT
 61.80m² / 665ft²

NOTES:
 © COPYRIGHT UMAA ARCHITECTURE LTD. DO NOT SCALE FROM THIS DRAWING. USE FIGURED DIMENSIONS ONLY. CONTRACTORS TO CHECK CRITICAL DIMENSIONS RELATIVE TO THEIR WORK AND REPORT ANY DISCREPANCIES TO THE ARCHITECT.

NOTE ON MATERIALS:

ILLUSTRATIVE BRICK TYPE SHOWN.
 REFER TO MATERIALS DISTRIBUTION PLAN FOR PLOT-SPECIFIC TYPES.

NOTE ON HEIGHTS:

GROUND LEVELS VARY. INDICATIVE HEIGHTS SHOWN ARE FROM FINISHED GROUND FLOOR LEVEL.



PROPOSED SIDE ELEVATION

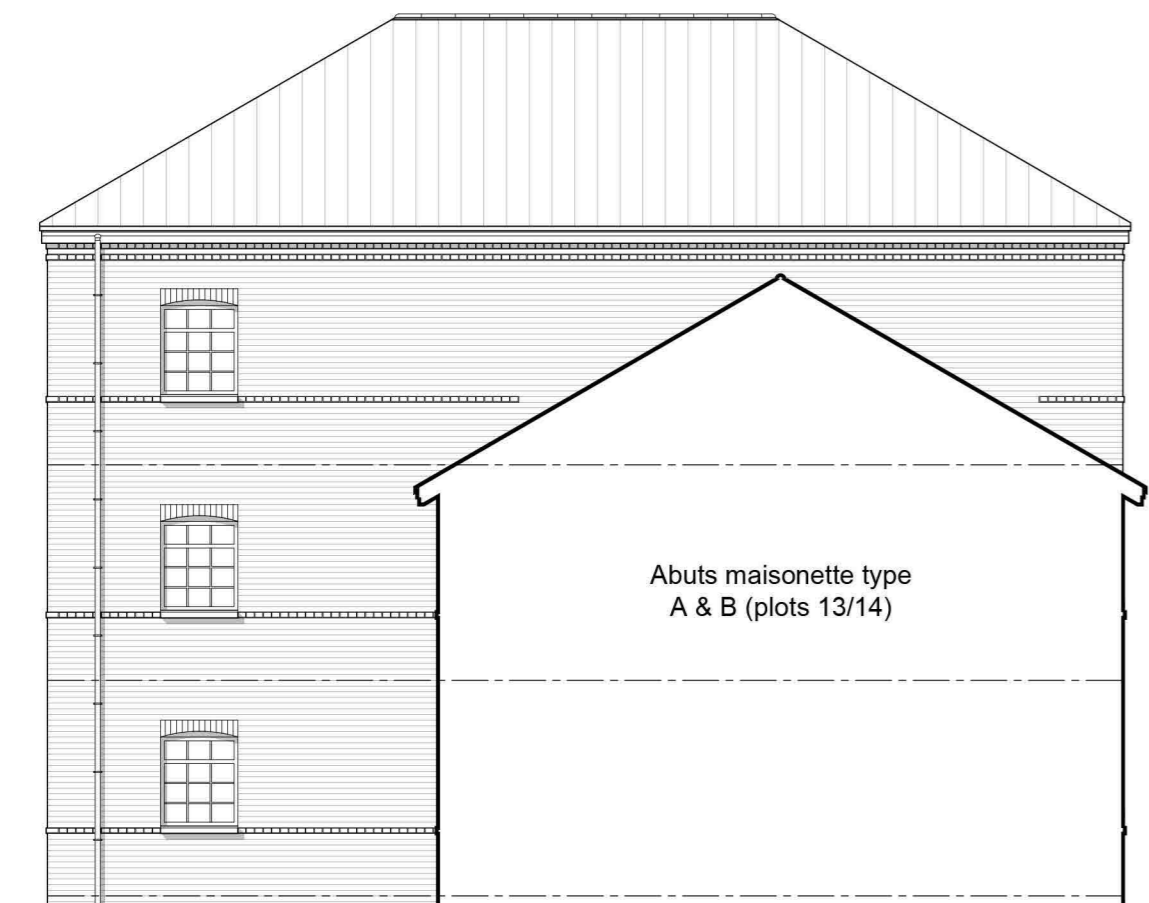
FACING LONDON ROAD
 1:100



PROPOSED FRONT ELEVATION

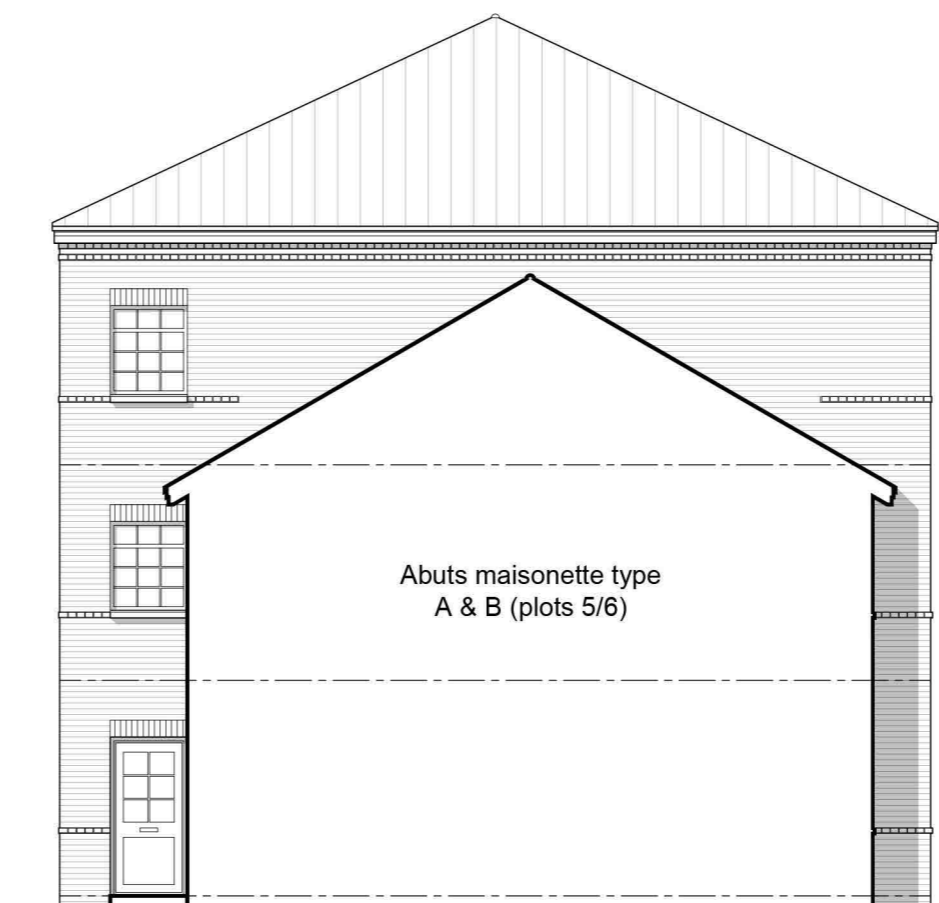
FACING PRIVATE DRIVE WITHIN SITE
 1:100

REV	DATE	DESCRIPTION	DRAWN	CHECKD
P01	29.04.24	FIRST ISSUE	MJK	MD



PROPOSED SIDE ELEVATION

FACING PARKING COURT
 1:100



PROPOSED REAR ELEVATION

FACING PARKING COURT
 1:100



www.umaa-a.com
 Architecture • Masterplanning • Urban Design
 Umaa Architecture Limited, 7 Mary Street,
 Jewellery Quarter, Birmingham, B3 1UD

PROJECT
 PROPOSED RESIDENTIAL DEVELOPMENT

ADDRESS
 FORMER FORD STROUD MOTORS,
 LONDON ROAD,
 STROUD,
 GL5 2AX

DRAWING TITLE
 APARTMENT BLOCK 2 - APARTMENT TYPES 'C' & 'D'
 ELEVATIONS

PROJECT REF.	STG.	DWG.	REVISION
01266	-03	-013	P01

SCALE
 1:100

SHEET SIZE
 A2

DATE
 16.11.23

DRAWING STATUS
PLANNING

