

APARTMENT BLOCK 1 - PLOTS 20-30

APARTMENT TYPE 'C' (Plot 24)
2-BED APARTMENT
62.00m² / 667ft²

APARTMENT TYPE 'C.1' (Plots 25, 26, 27)
2-BED APARTMENT
61.80m² / 665ft²

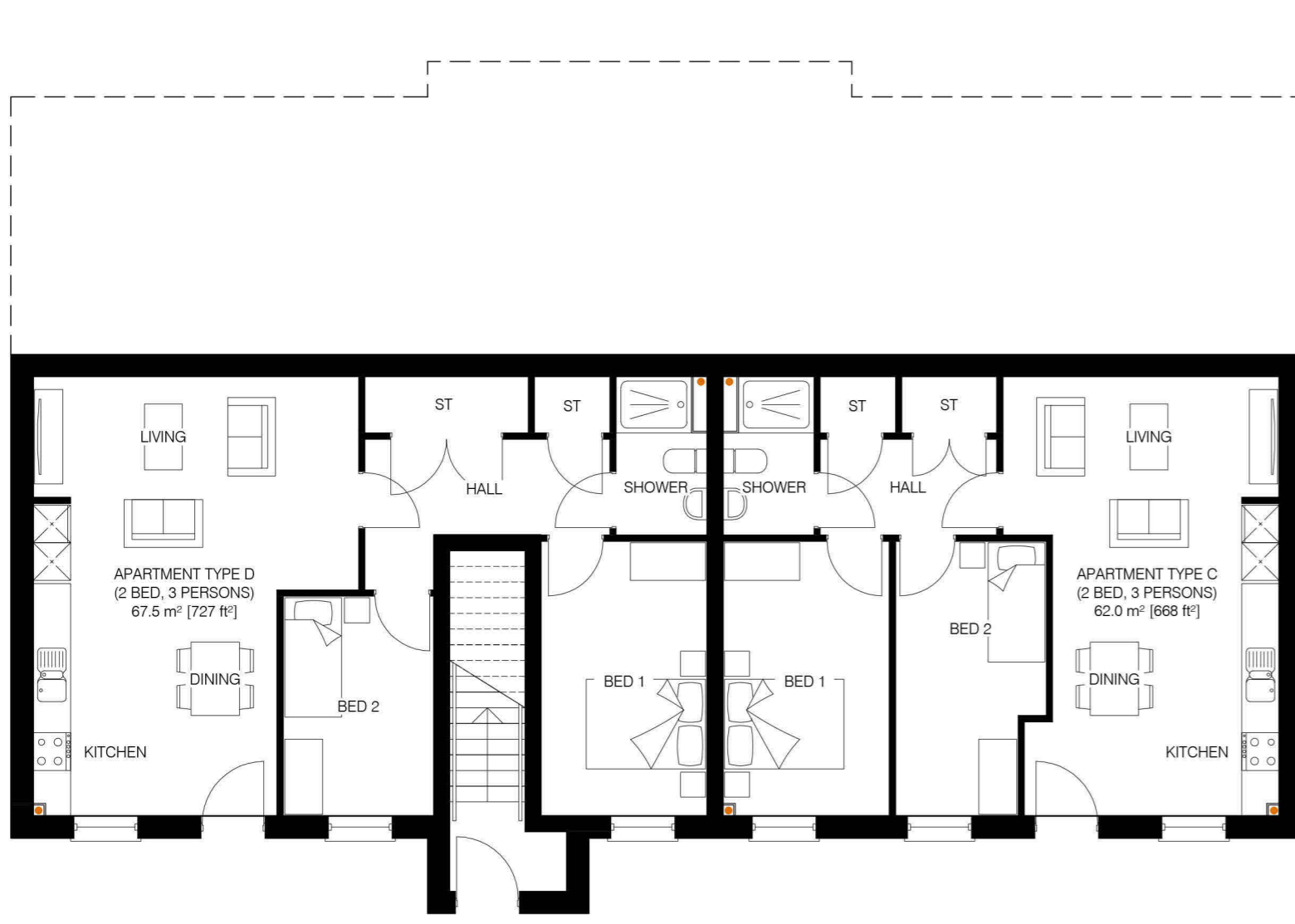
APARTMENT TYPE 'C.2' (Plots 28, 29, 30)
2-BED APARTMENT
63.30m² / 681ft²

APARTMENT TYPE 'D' (Plot 20)
2-BED APARTMENT
67.50m² / 727ft²

APARTMENT TYPE 'D.1' (Plot 21)
2-BED APARTMENT
61.70m² / 664ft²

APARTMENT TYPE 'D.2' (Plots 22, 23)
2-BED APARTMENT
69.40m² / 747ft²

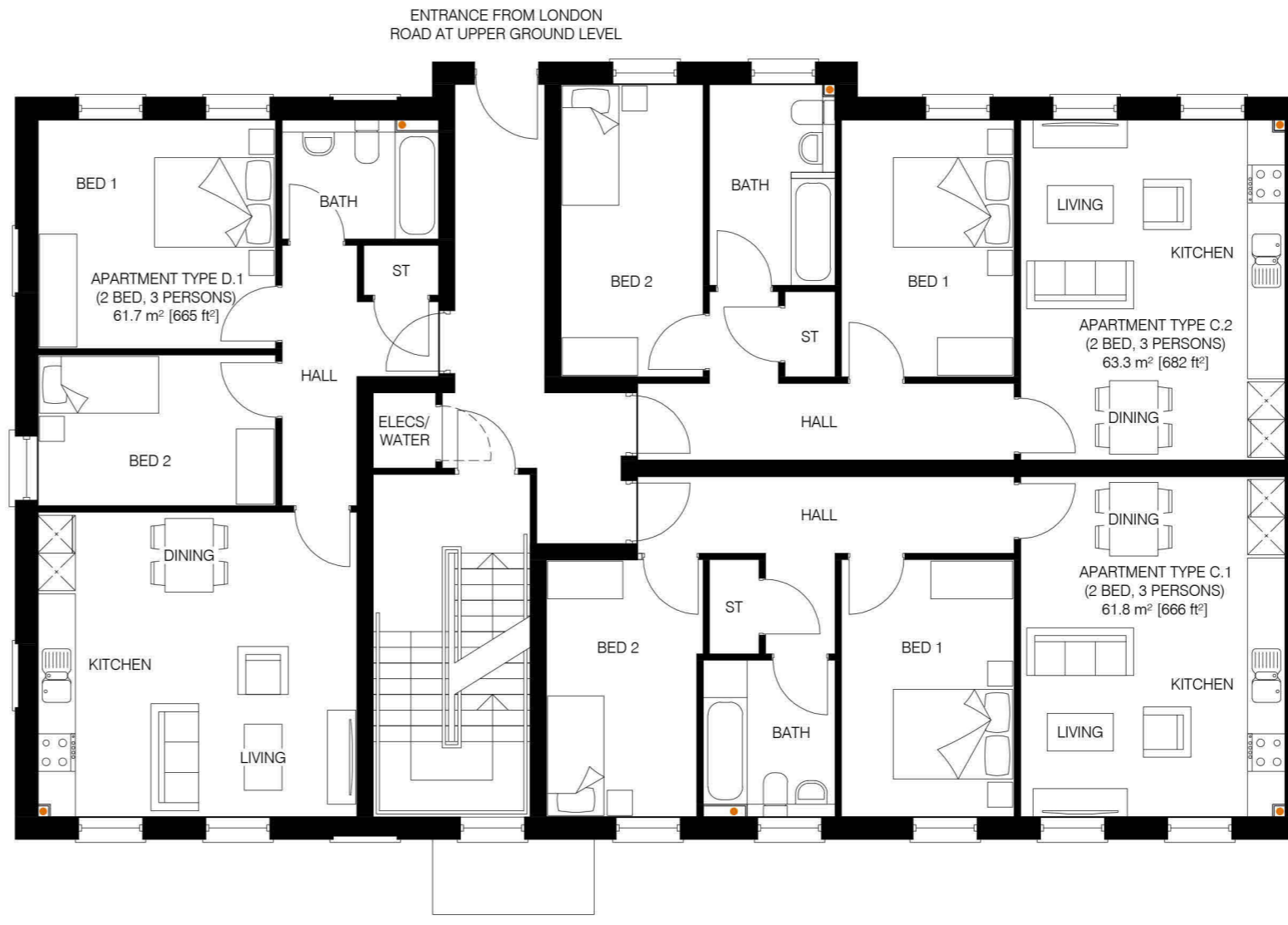
NOTES
© COPYRIGHT UMAA ARCHITECTURE LTD. DO NOT SCALE FROM THIS DRAWING. USE FIGURED DIMENSIONS ONLY. CONTRACTORS TO CHECK CRITICAL DIMENSIONS RELATIVE TO THEIR WORK AND REPORT ANY DISCREPANCIES TO THE ARCHITECT.



ENTRANCE FROM PARKING COURT
AT LOWER GROUND LEVEL

PROPOSED LOWER GROUND FLOOR PLAN

1:100



ENTRANCE FROM LONDON
ROAD AT UPPER GROUND LEVEL

PROPOSED GROUND FLOOR PLAN

1:100

REV	DATE	DESCRIPTION	DRAWN	CHECKED
P01	29.04.24	PLANNING ISSUE	MJK	MD



PROPOSED FIRST FLOOR PLAN

1:100



PROPOSED SECOND FLOOR PLAN

1:100



www.umaa-a.com
Architecture • Masterplanning • Urban Design
Umaa Architecture Limited, 7 Mary Street,
Jewellery Quarter, Birmingham, B3 1UD

PROJECT
PROPOSED RESIDENTIAL DEVELOPMENT

ADDRESS
FORMER FORD STROUD MOTORS,
LONDON ROAD,
STROUD,
GL5 2AX

DRAWING TITLE
APARTMENT BLOCK 1 -
PROPOSED FLOOR PLANS

PROJECT REF.	STG.	DWG.	REVISION
01266	-03	-009	P01

SCALE 1:100 SHEET SIZE A2 DATE 16.11.23 DRAWING STATUS **PLANNING**

INDICATIVE SCALE IN METRES 0 1 2 3 4 5 DRAWING NORTH NORTH