

## APARTMENT BLOCK 1 - PLOTS 20-30

**APARTMENT TYPE 'C'** (Plot 24)  
2-BED APARTMENT  
62.00m<sup>2</sup> / 667ft<sup>2</sup>

**APARTMENT TYPE 'D'** (Plot 20)  
2-BED APARTMENT  
67.50m<sup>2</sup> / 727ft<sup>2</sup>

**APARTMENT TYPE 'C.1'** (Plots 25, 26, 27)  
2-BED APARTMENT  
61.80m<sup>2</sup> / 665ft<sup>2</sup>

**APARTMENT TYPE 'D.1'** (Plot 21)  
2-BED APARTMENT  
61.70m<sup>2</sup> / 664ft<sup>2</sup>

**APARTMENT TYPE 'C.2'** (Plots 28, 29, 30)  
2-BED APARTMENT  
63.30m<sup>2</sup> / 681ft<sup>2</sup>

**APARTMENT TYPE 'D.2'** (Plots 22, 23)  
2-BED APARTMENT  
69.40m<sup>2</sup> / 747ft<sup>2</sup>

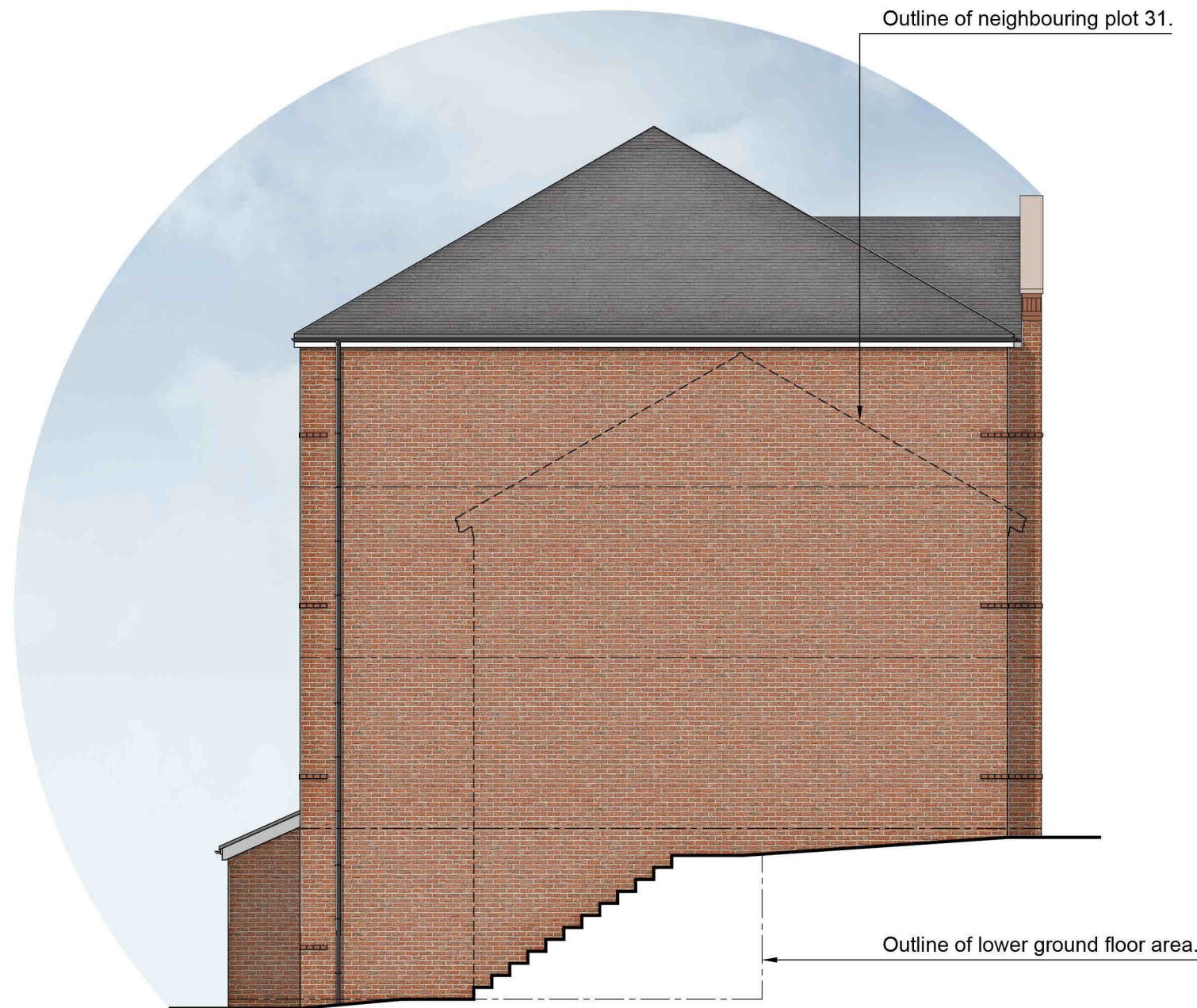
NOTES  
© COPYRIGHT UMAA ARCHITECTURE LTD. DO NOT SCALE FROM THIS DRAWING, USE FIGURED DIMENSIONS ONLY. CONTRACTORS TO CHECK CRITICAL DIMENSIONS RELATIVE TO THEIR WORK AND REPORT ANY DISCREPANCIES TO THE ARCHITECT.

### NOTE ON MATERIALS:

ILLUSTRATIVE BRICK TYPE SHOWN.  
REFER TO MATERIALS DISTRIBUTION PLAN FOR PLOT-SPECIFIC TYPES.

### NOTE ON HEIGHTS:

GROUND LEVELS VARY. INDICATIVE HEIGHTS SHOWN ARE FROM FINISHED GROUND FLOOR LEVEL.



### PROPOSED SIDE ELEVATION

FACING SIDE OF PLOT 31 (PLOT 31 OUTLINE SHOWN DASHED)

1:100



### PROPOSED REAR ELEVATION

FACING COURTYARD

1:100

REV	DATE	DESCRIPTION	DRAWN	CHECKD
P01	29.04.24	PLANNING ISSUE	MJK	MD



www.umaa-a.com  
Architecture • Masterplanning • Urban Design  
Umaa Architecture Limited, 7 Mary Street,  
Jewellery Quarter, Birmingham, B3 1UD

PROJECT  
PROPOSED RESIDENTIAL DEVELOPMENT

ADDRESS  
FORMER FORD STROUD MOTORS,  
LONDON ROAD,  
STROUD,  
GL5 2AX

DRAWING TITLE  
APARTMENT BLOCK 1 -  
ELEVATIONS (2 OF 2)

PROJECT REF.	STG.	DWG.	REVISION
01266	-03	-011	P01

SCALE  
1:100

SHEET SIZE  
A2

DATE  
16.11.23

DRAWING STATUS  
**PLANNING**

INDICATIVE SCALE IN METRES  
0 1 2 3 4 5

DRAWING NORTH  
NORTH