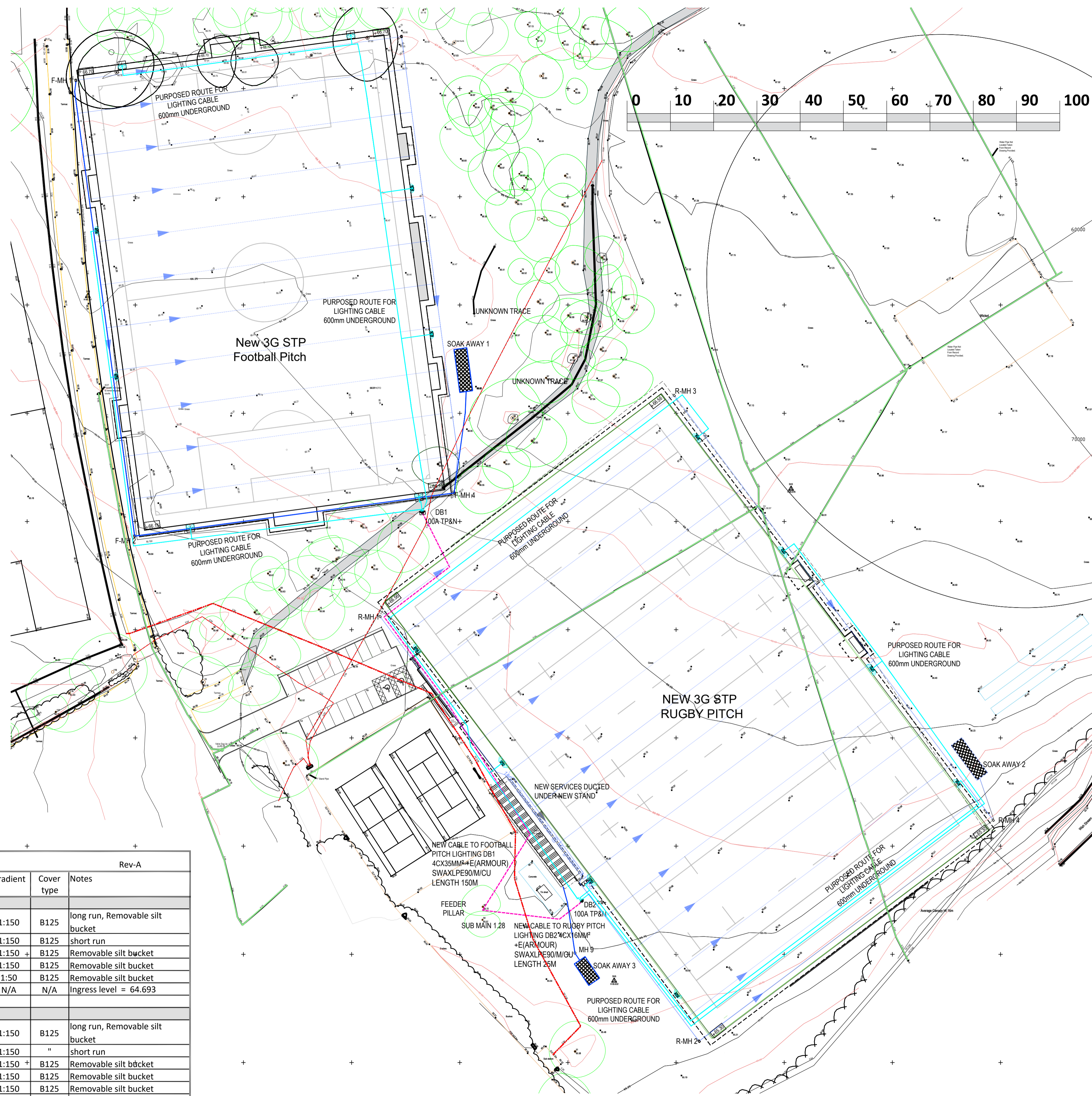


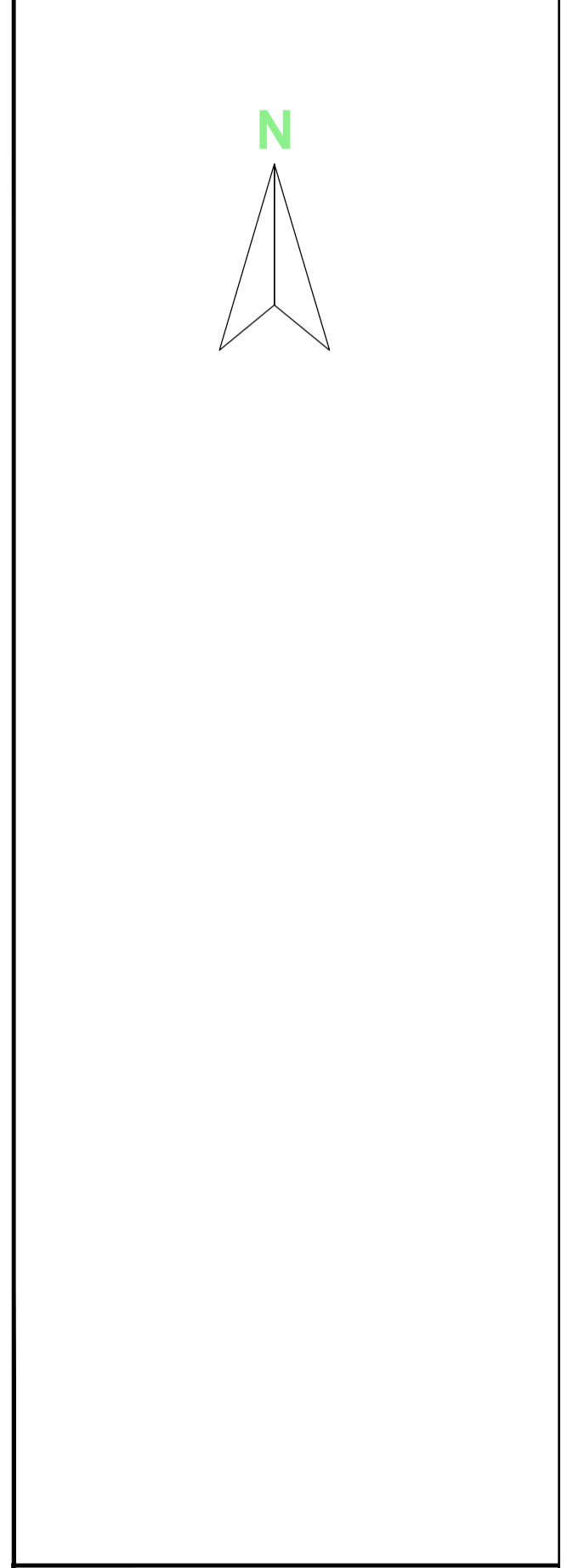
**KEY**

- EXISTING ELECTRICAL HV
- EXISTING ELECTRICAL LV
- PROPOSED ELECTRICAL HV
- PROPOSED ELECTRICAL LV
- EXISTING WATER SUPPLY
- EXISTING SW DRAINAGE
- PROPOSED LAND DRAIN
- PROPOSED SOAK AWAY

RMA Sandhurst - Upgraded sports pitches.										Rev-A
Manhole Name	Cover Level	Invert Level	Chamber dia / size	Manhole depth	outlet invert level	outlet size	Pipe length	Gradient	Cover type	Notes
<b>Football Pitch</b>										
Silt Pit MH1 (a)	66.66	65.61	450mm	1.05	65.91	150mm	105.5m	1:150	B125	long run, Removable silt bucket
(b)	"	"	"	"	65.91	150mm	76.3m	1:150	B125	short run
Silt Pit MH2	66.15	64.3	450mm	1.85	65.207	150mm	76.3	1:150	B125	Removable silt bucket
Silt Pit MH3	66.7	64.502	450mm	2.198	65.402	150mm	105.5m	1:150	B125	Removable silt bucket
Silt Pit MH4	66.25	64.399	450mm	1.851	64.699	150mm	23.5	1:50	B125	Removable silt bucket
Soak Away 1	66.63	63.693	3x10x1 m	N/A	N/A	N/A	N/A	N/A	N/A	Ingress level = 64.693
<b>Rugby Pitch</b>										
Silt Pit MH 1 (a)	66.12	65.07	450mm	1.05	65.37	150mm	123m	1:150	B125	long run, Removable silt bucket
(b)	"	"	"	"	65.37	150mm	84.6m	1:150	"	short run
Silt Pit MH 2	65.3	64.25	450mm	1.05	64.55	150mm	84.6m	1:150	B125	Removable silt bucket
Silt Pit MH 3	66.7	64.506	450mm	2.194	64.806	150mm	123m	1:150	B125	Removable silt bucket
Silt Pit MH 4	65.58	63.686	450mm	1.894	63.986	150mm	10m	1:150	B125	Removable silt bucket
Soak Away 2	66.14	63.0973	3x10x1 m	N/A	N/A	N/A	N/A	N/A	N/A	ingress Level = 63.923
RWP outlet 1	65.8	65.05	100mm	N/A	65.05	100mm	16.1	1:150	N/A	Access point on down pipe at any change of direction
Silt Pit MH9	65.72	64.67	450mm	1.05	64.97	150mm	N/A	1:150	B125	Removable silt bucket
Soak Away 3	65.72	64.42	5x5x0.5 m	N/A	N/A	N/A	N/A	N/A	N/A	Ingress level = 64.97
Class B125 manhole covers. BS EN 124:2015 Group 2 standards Capable of withstanding a 125kN test load										
<b>NOTE: wish stream level 63.38</b>										



**NOTES:**  
 All dimensions to be checked on site and any discrepancy notified to The Martin Ralph Group. Written dimensions are to be used in preference to scaled dimensions.  
 This drawing is the property of The Martin Ralph Group and must not be reproduced, in part or whole, or deviated from, without their permission.  
 It is essential that prior to commencement and during construction works, the contractor reviews the drawings and specification and discusses with the practice any inconsistencies, anomalies, non-industry standard features or other concerns.  
 For both pricing and construction purposes Structural, Mechanical and Electrical Engineers designs, calculations and sizes etc are to take preference over the layout drawings. Any discrepancies are to be brought to the immediate attention of The Martin Ralph Group.



AMENDMENTS	DATE
01	PLANNING 02.05.2024

CLIENT  
DIO

PROJECT  
RMA SANDHURST  
PROPOSED 3G PITCHES

DRAWING TITLE  
EXISTING AND PROPOSED SERVICES  
LOCATIONS

DATE 02/05/2024	SCALE 1:500	PAPER SIZE A1
DRAWN BY AC	REVISION 01	

**MARTIN RALPH GROUP**

CHARTERED SURVEYORS  
ARCHITECTS & ENGINEERS

11 Dragon House  
Hussar Court  
Brambles Business Park  
Portsmouth  
Hampshire  
PO7 7BP

www.martinralph.co.uk  
info@martinralph.co.uk  
T. 023 9225 7711  
F. 023 9225 7712