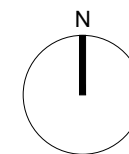
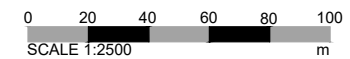



DO NOT SCALE THIS DOCUMENT - USE FIGURED DIMENSIONS ONLY
 ALL DIMENSIONS MUST BE CHECKED ON SITE PRIOR TO COMMENCEMENT OF ANY RELATED WORKS.
 THIS DOCUMENT IS COPYRIGHT OF THE ORIGINATOR, IT MUST NOT BE ALTERED, REPRODUCED OR DISTRIBUTED WITHOUT PRIOR CONSENT.
 THIS DOCUMENT MUST BE READ IN CONJUNCTION WITH ALL SUPPORTING DOCUMENTS PRODUCED BY THE ORIGINATOR AND OTHER PROJECT DISCIPLINES.
 OS MAPPING OBTAINED FROM PROMAP LICENCE No. 100022432 REPRODUCED BY BERRYS UNDER OS LICENCE No. 100003668
 DISCLAIMER NOTES:



SCALE BAR & NORTH POINT:



BEECH HOUSE
 SHREWSBURY BUSINESS PARK
 SHREWSBURY
 SHROPSHIRE
 SY2 6FG
 TEL: 01743 271697
 shrewsbury@berrys.uk.com
 www.berrys.uk.com

ORIGINATING OFFICE:
 **SITE AREA**
1900m²

B	Red line amended	27.03.23	AW	-
A	Red line amended	01.12.23	AW	-
REV	DESCRIPTION	DATE	BY	CHKD

BERRYS

STATUS:	PLANNING			
CLIENT:	RD Lea.			
PROJECT:	Residential Development Land @ Weston Lullingfields Shrewsbury, SY4 2AA.			
DRAWING:	Location Plan			
SCALE @ A3:	DRAWN BY:	CHKD BY:	DATE:	
1:2500	AW	AH	15.09.23	
DRAWING No:	REVISION:			
SA48763 -BRY-ST - PL- A - 0001_ B				

