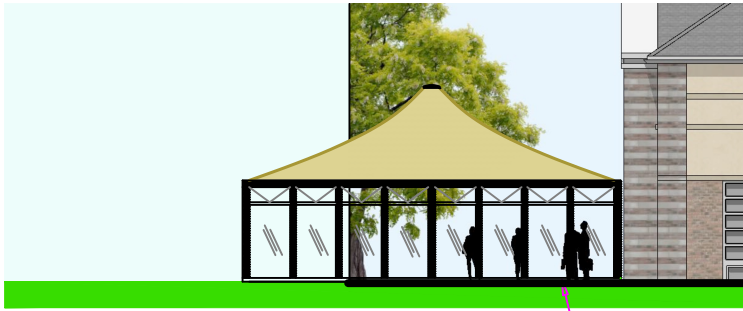
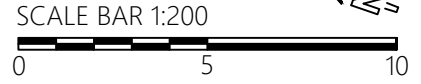


Fabric: Cream type 2  
 Steel: Galv. & painted RAL 7037 Grey

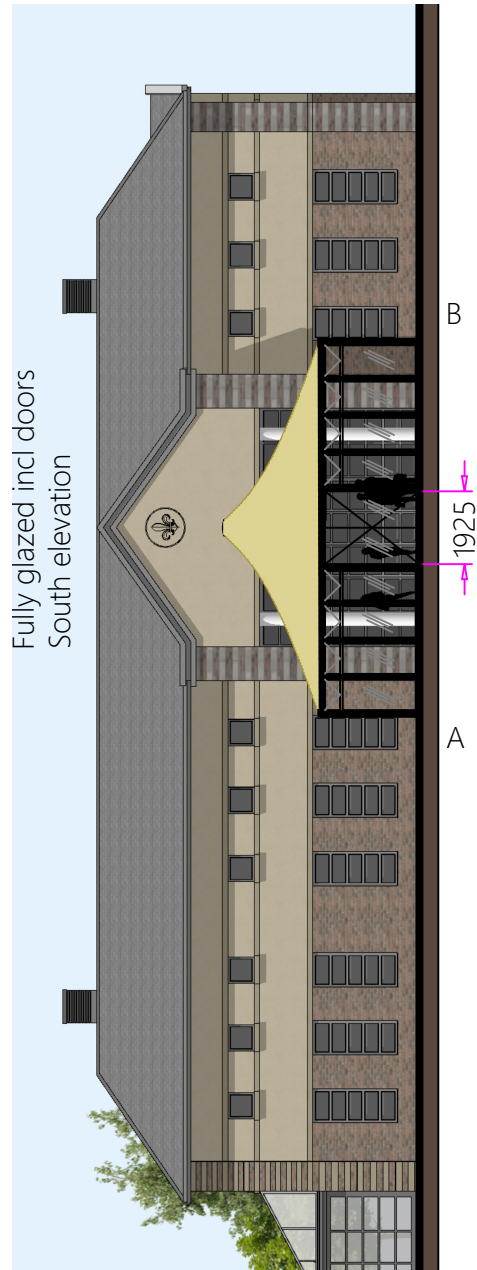
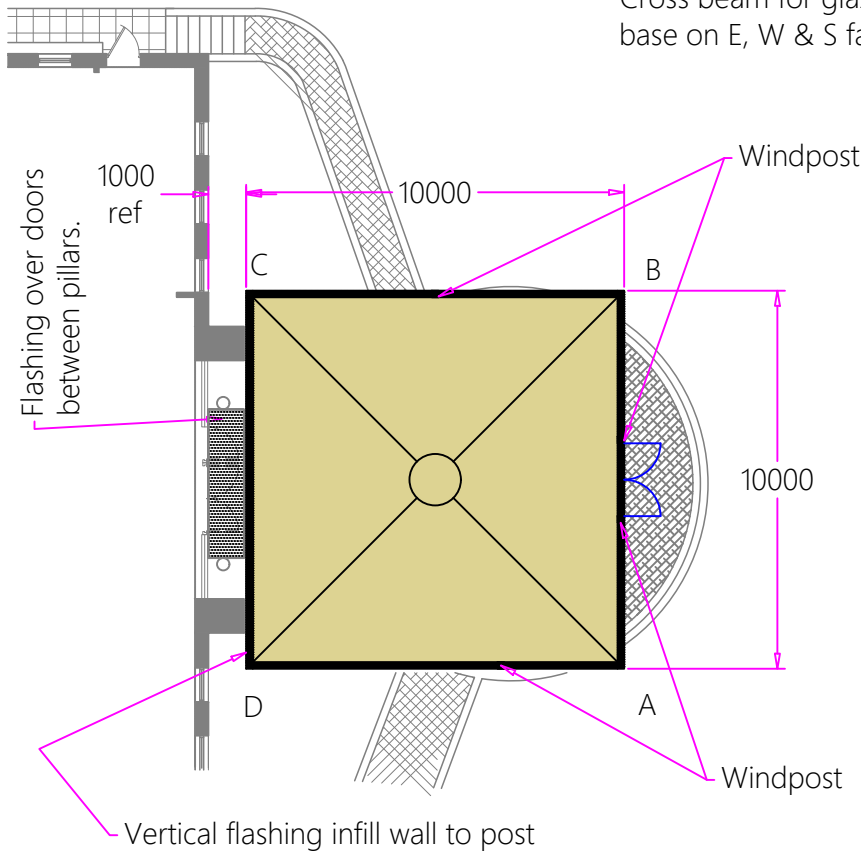
Opening top hung windows on East & South faces.



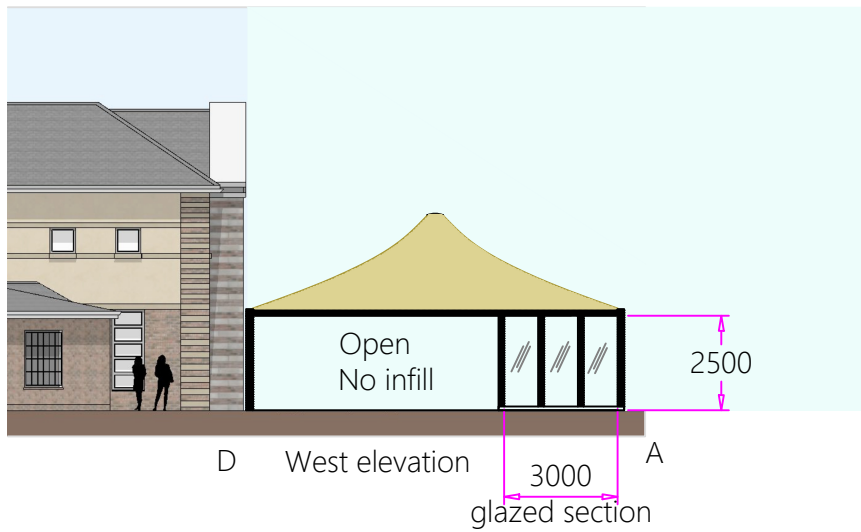
B Fully glazed East elevation C



Cross beam for glazing base on E, W & S faces



Fully glazed incl doors South elevation



D West elevation A  
 2500  
 3000 glazed section

Printed 29.4.24 12:17 Source CAD: 622

E	Scale bar was 1:100 in error.	29-4-24
D	South Elev of building added. East elev adjusted.	2-4-24
C	Updates & was drg no WHSS-10.	20-3-24
B	Updates.	5-3-24
A	New drawing	
Issue	Amendment	Date

Unit 3.3 Central Point Kirpal Road  
 Portsmouth PO3 6FH  
 T+44(0)845 652 2420 F+44(0)845 652 2425  
 www.auracustom.com Copyright 2024



Project no. 3176 Scale: 1:200 @ A4 By RT Date 21-2-24  
 Project name: Tensile Fabric Pavilion Entrance  
 Client: Westbourne House School

Overview

Drg no. 622-10