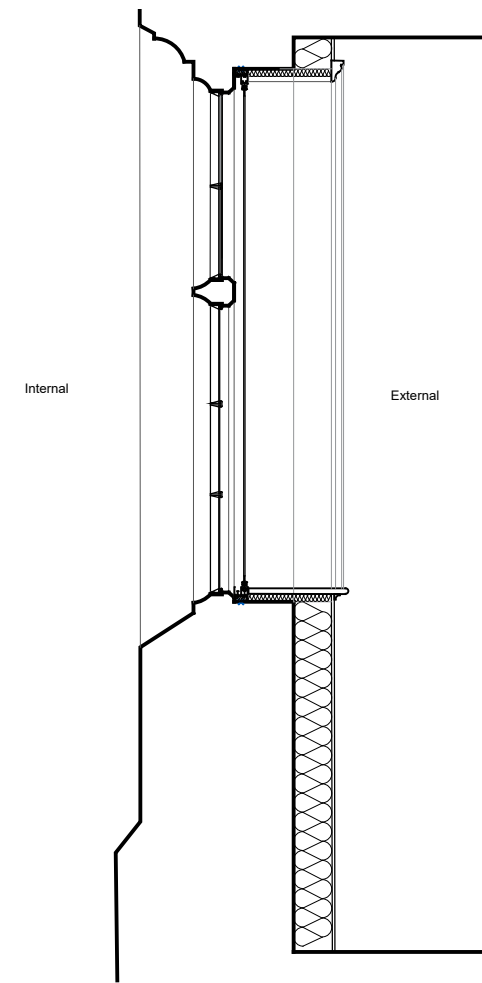
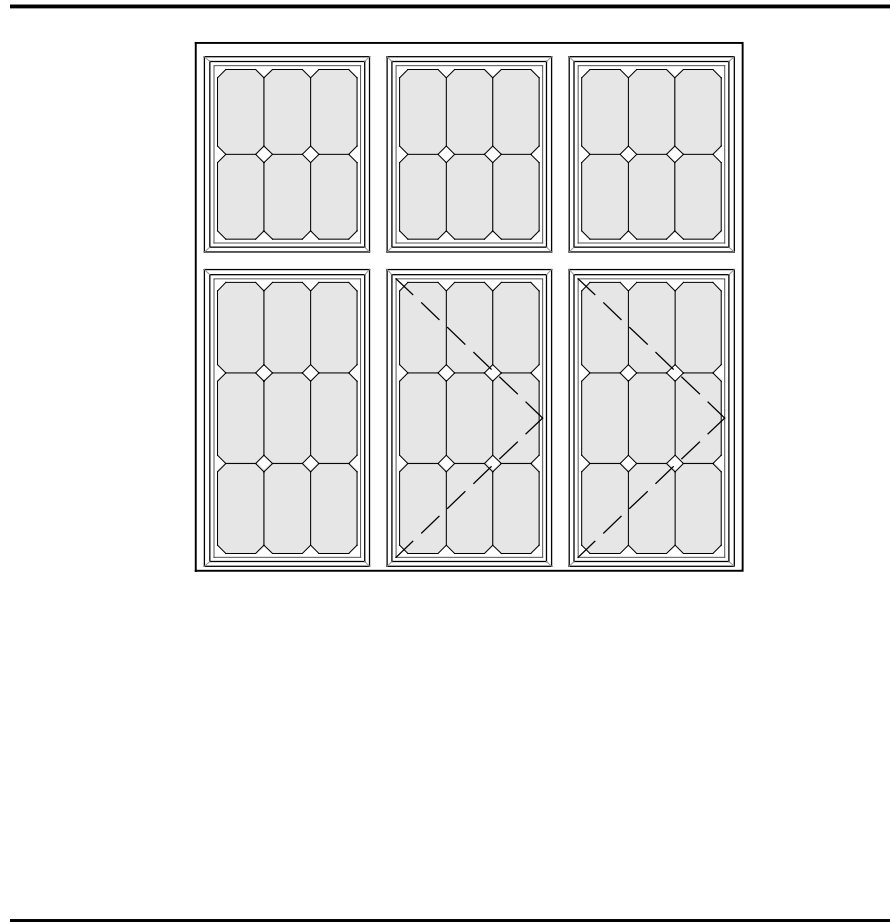
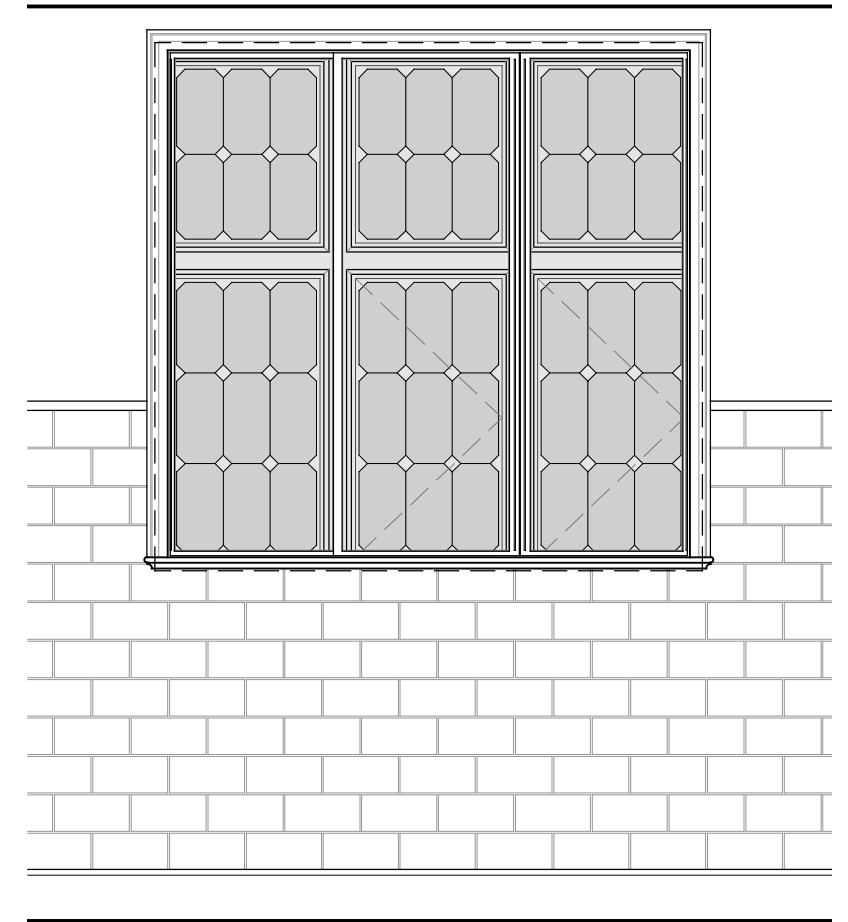


Existing Window



Proposed Secondary Glazing to Existing Window



Notes

- Any dwg format drawing is to be read in conjunction with and at the scale of the accompanying pdf.
- Where colours other than black or grey are used, the drawing must be plotted in colour.
- For status 'C' (Construction) drawings all dimensions are to be checked on site by the contractor, scaling is for Local Authority purposes only.
- Unless otherwise indicated, all dimensions are in millimeters.
- All information on this drawing is to be read in conjunction with the relevant Donald Insall Associates specification and trade contractors' drawings and information by specialists.
- In the event of any discrepancy, please contact us immediately.
- This drawing may contain survey information by others and is to be used solely for the purposes for which it was issued.
- These are uncontrolled documents issued for information purposes only. If you have any queries regarding the drawings, please contact DIA immediately.
- Please note DIA cannot be held responsible for any errors arising from changes made to an uncontrolled dwg file.

© 2019 DONALD INSALL ASSOCIATES LTD

Drawing Status				
F	Feasibility			
S	Sketch Design			
P	Planning			
B	Building Control			
D	Design Development			
M	Measurement			
T	Tender			
C	Construction			
R	Record			

Rev	Date	Dwn	Auth	Revision
0	09-05-24	ECL	TXH	Initial Issue

Donald Insall Associates
 Chartered Architects and Historic Building Consultants

Bridgegate House, 5 Bridge Place
 Chester CH1 1SA
 (+44) 01244 350 063
 chester@insall-architects.co.uk

Paradise Lodge, Hodnet

Type 3 Secondary Glazing As Proposed	Project	HPC.01	No	3222
	Scale (A3)	1: 20	Status	4M
			Revision	0