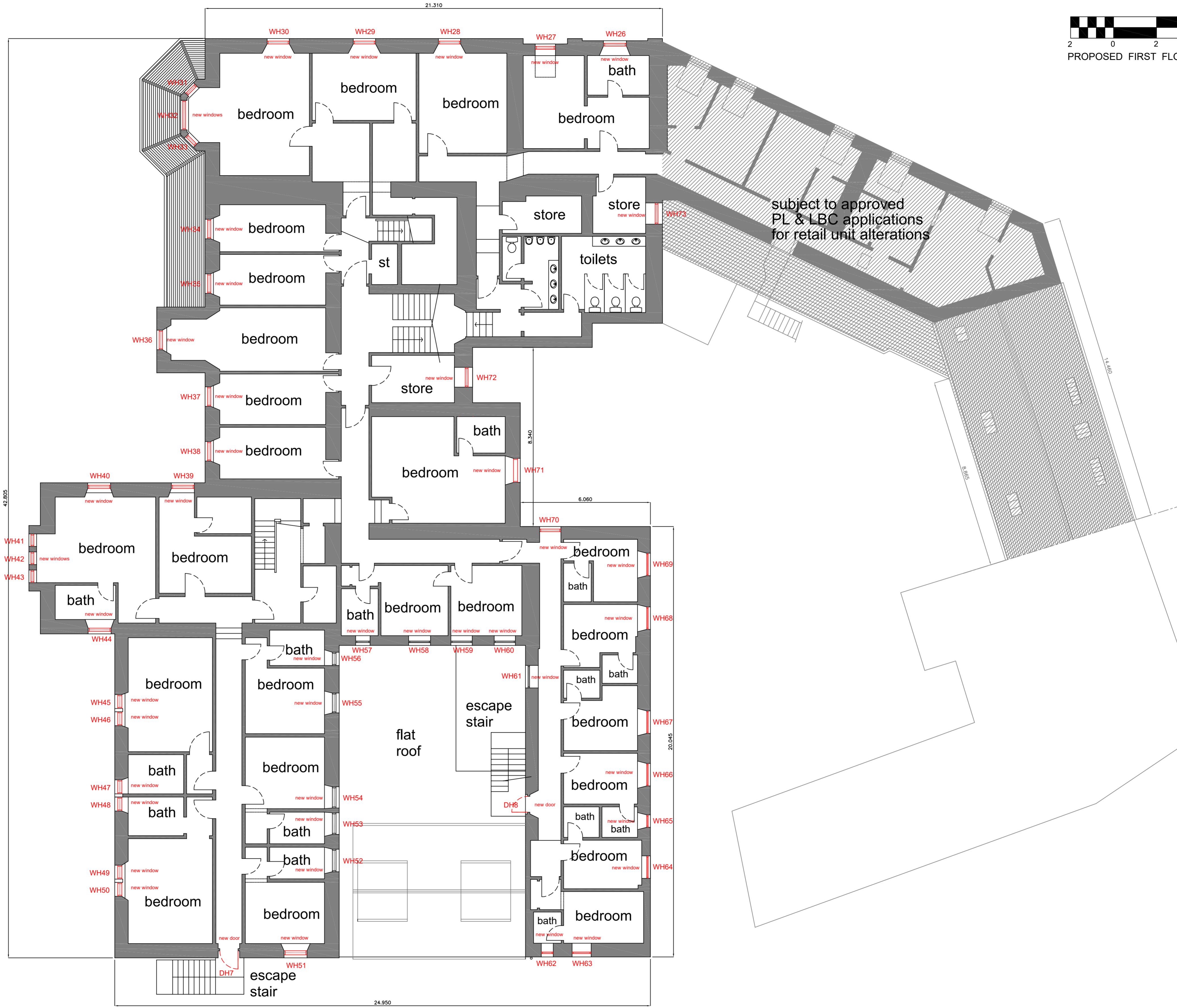


WINDOW SCHEDULE - FIRST FLOOR								
Window ref	Location	Width	Height	Material	Type	Colour	Upper Sash	Lower Sash
WH08	Hotel bathroom (North elevation)	0.900m	1.470m	Timber	Sash & Case	White	Conservation double glazed 6 Pane Sash	Conservation toughened double glazed 6 Pane Sash
WH07	Hotel bedroom (North elevation)	0.900m	1.470m	Timber	Sash & Case	White	Conservation double glazed 6 Pane Sash	Conservation toughened double glazed 6 Pane Sash
WH08	Hotel bedroom (North elevation)	1.030m	1.720m	Timber	Sash & Case	White	Conservation double glazed 6 Pane Sash	Conservation toughened double glazed 6 Pane Sash
WH09	Hotel bedroom (North elevation)	1.030m	1.720m	Timber	Sash & Case	White	Conservation double glazed 6 Pane Sash	Conservation toughened double glazed 6 Pane Sash
WH00	Hotel bedroom (North elevation)	1.030m	1.720m	Timber	Sash & Case	White	Conservation double glazed 6 Pane Sash	Conservation toughened double glazed 6 Pane Sash
WH01	Hotel bedroom (West elevation)	0.800m	1.960m	Timber	Sash & Case	White	Conservation double glazed 2 Pane Sash	Conservation toughened double glazed 2 Pane Sash
WH02	Hotel bedroom (West elevation)	1.370m	1.960m	Timber	Sash & Case	White	Conservation double glazed 6 Pane Sash	Conservation toughened double glazed 6 Pane Sash
WH03	Hotel bedroom (West elevation)	0.600m	1.960m	Timber	Sash & Case	White	Conservation double glazed 2 Pane Sash	Conservation toughened double glazed 2 Pane Sash
WH04	Hotel bedroom (North elevation)	0.900m	1.960m	Timber	Sash & Case	White	Conservation double glazed 6 Pane Sash	Conservation toughened double glazed 6 Pane Sash
WH05	Hotel bedroom (North elevation)	0.900m	1.960m	Timber	Sash & Case	White	Conservation double glazed 6 Pane Sash	Conservation toughened double glazed 6 Pane Sash
WH06	Hotel bedroom (North elevation)	0.900m	1.960m	Timber	Sash & Case	White	Conservation double glazed 6 Pane Sash	Conservation toughened double glazed 6 Pane Sash
WH07	Hotel bedroom (West elevation)	0.900m	1.960m	Timber	Sash & Case	White	Conservation double glazed 6 Pane Sash	Conservation toughened double glazed 6 Pane Sash
WH08	Hotel bedroom (West elevation)	0.900m	1.960m	Timber	Sash & Case	White	Conservation double glazed 6 Pane Sash	Conservation toughened double glazed 6 Pane Sash
WH09	Hotel bedroom (West elevation)	1.070m	1.940m	Timber	Sash & Case	White	Conservation double glazed 6 Pane Sash	Conservation toughened double glazed 6 Pane Sash
WH40	Hotel bedroom (North elevation)	1.070m	1.940m	Timber	Sash & Case	White	Conservation double glazed 6 Pane Sash	Conservation toughened double glazed 6 Pane Sash
WH41	Hotel bedroom (North elevation)	0.580m	1.960m	Timber	Sash & Case	White	Conservation double glazed 2 Pane Sash	Conservation toughened double glazed 2 Pane Sash
WH42	Hotel bedroom (North elevation)	0.580m	1.960m	Timber	Sash & Case	White	Conservation double glazed 2 Pane Sash	Conservation toughened double glazed 2 Pane Sash
WH43	Hotel bedroom (West elevation)	0.580m	1.960m	Timber	Sash & Case	White	Conservation double glazed 2 Pane Sash	Conservation toughened double glazed 2 Pane Sash
WH44	Hotel bedroom (South elevation)	1.070m	1.940m	Timber	Sash & Case	White	Conservation double glazed 6 Pane Sash	Conservation toughened double glazed 6 Pane Sash
WH45	Hotel bedroom (West elevation)	2.160m	0.830m	Timber	Sash & Case	White	Conservation double glazed single Pane Sash	Conservation toughened double glazed single Pane Sash
WH46	Hotel bedroom (West elevation)	2.160m	0.830m	Timber	Sash & Case	White	Conservation double glazed single Pane Sash	Conservation toughened double glazed single Pane Sash
WH47	Hotel bedroom (West elevation)	2.160m	0.830m	Timber	Sash & Case	White	Conservation double glazed single Pane Sash	Conservation toughened double glazed single Pane Sash
WH48	Hotel bedroom (West elevation)	2.160m	0.830m	Timber	Sash & Case	White	Conservation double glazed single Pane Sash	Conservation toughened double glazed single Pane Sash
WH49	Hotel bedroom (West elevation)	2.160m	0.830m	Timber	Sash & Case	White	Conservation double glazed single Pane Sash	Conservation toughened double glazed single Pane Sash
WH00	Hotel bedroom (West elevation)	2.160m	0.830m	Timber	Sash & Case	White	Conservation double glazed single Pane Sash	Conservation toughened double glazed single Pane Sash
WH01	Hotel bedroom (South elevation)	2.150m	1.070m	Timber	Sash & Case	White	Conservation double glazed 2 Pane opening Sash	Conservation toughened double glazed 2 Pane fixed Sash
WH02	Hotel bedroom (Internal East elevation)	0.980m	2.160m	Timber	Lookalike Sash & Case	White	Conservation double glazed 2 Pane opening Sash	Conservation toughened double glazed 2 Pane fixed Sash
WH03	Hotel bedroom (Internal East elevation)	0.980m	2.160m	Timber	Lookalike Sash & Case	White	Conservation double glazed 2 Pane opening Sash	Conservation toughened double glazed 2 Pane fixed Sash
WH04	Hotel bedroom (Internal East elevation)	0.980m	2.160m	Timber	Lookalike Sash & Case	White	Conservation double glazed 2 Pane opening Sash	Conservation toughened double glazed 2 Pane fixed Sash
WH05	Hotel bedroom (Internal East elevation)	0.980m	2.160m	Timber	Lookalike Sash & Case	White	Conservation double glazed 2 Pane opening Sash	Conservation toughened double glazed 2 Pane fixed Sash
WH06	Hotel bedroom (Internal East elevation)	0.850m	1.020m	Timber	Lookalike Sash & Case	White	Conservation double glazed single Pane opening Sash	Conservation toughened double glazed single Pane fixed Sash
WH07	Hotel bedroom (South elevation)	0.670m	1.800m	Timber	Lookalike Sash & Case	White	Conservation double glazed 2 Pane opening Sash	Conservation toughened double glazed 2 Pane fixed Sash
WH08	Hotel bedroom (South elevation)	1.020m	1.800m	Timber	Lookalike Sash & Case	White	Conservation double glazed 2 Pane opening Sash	Conservation toughened double glazed 2 Pane fixed Sash
WH09	Hotel bedroom (South elevation)	1.020m	1.800m	Timber	Lookalike Sash & Case	White	Conservation double glazed 2 Pane opening Sash	Conservation toughened double glazed 2 Pane fixed Sash
WH00	Hotel bedroom (South elevation)	1.020m	1.800m	Timber	Lookalike Sash & Case	White	Conservation double glazed 2 Pane opening Sash	Conservation toughened double glazed 2 Pane fixed Sash
WH01	Hotel Corridor (Internal West elevation)	1.050m	1.450m	PVC	Casement (Tri & Turn)	White	Tri & Turn toughened double glazed	Fixed toughened double glazed
WH02	Hotel bedroom (South elevation)	0.960m	1.100m	PVC	Casement (Tri & Turn)	White	Tri & Turn toughened double glazed	N/A
WH03	Hotel bedroom (South elevation)	0.890m	1.900m	PVC	Casement (Tri & Turn)	White	Tri & Turn toughened double glazed	N/A
WH04	Hotel bedroom (East elevation)	1.050m	1.450m	PVC	Casement (Tri & Turn)	White	Tri & Turn toughened double glazed	N/A
WH05	Hotel bedroom (East elevation)	0.960m	1.100m	PVC	Casement (Tri & Turn)	White	Tri & Turn toughened double glazed	N/A
WH06	Hotel bedroom (East elevation)	1.050m	1.450m	PVC	Casement (Tri & Turn)	White	Tri & Turn toughened double glazed	N/A
WH07	Hotel bedroom (East elevation)	1.050m	1.450m	PVC	Casement (Tri & Turn)	White	Tri & Turn toughened double glazed	N/A
WH08	Hotel bedroom (East elevation)	1.050m	1.450m	PVC	Casement (Tri & Turn)	White	Tri & Turn toughened double glazed	N/A
WH09	Hotel bedroom (East elevation)	1.050m	1.450m	PVC	Casement (Tri & Turn)	White	Tri & Turn toughened double glazed	N/A
WH00	Hotel Corridor (North elevation)	1.050m	1.450m	PVC	Casement (Tri & Turn)	White	Tri & Turn toughened double glazed	N/A
WH01	Hotel bedroom (North elevation)	1.100m	1.960m	Timber	Lookalike Sash & Case	White	Conservation double glazed 4 Pane opening Sash	Conservation toughened double glazed 4 Pane fixed Sash
WH02	Hotel store (East elevation)	0.900m	1.100m	Timber	Lookalike Sash & Case	White	Conservation double glazed 4 Pane opening Sash	Conservation toughened double glazed 4 Pane fixed Sash
WH03	Hotel store (East elevation)	0.900m	1.100m	Timber	Lookalike Sash & Case	White	Conservation double glazed 4 Pane opening Sash	Conservation toughened double glazed 4 Pane fixed Sash

DOOR SCHEDULE - FIRST FLOOR									
Door ref	Location	Width	Height	Material	Glazing	Colour	Lower panel	Upper panel	Upper frame/sill
DH7	Hotel Corridor (South elevation)	1.000m	2.100m	Timber	upper 4 pane double glazed	White	Raised and fielded fixed panel	Double glazed with toughened glass	Double glazed fixed with toughened glass
DH8	Hotel Corridor (South elevation)	0.900m	2.100m	PVC	double glazed	White	Raised and fielded fixed panel	Double glazed with toughened glass	N/A



PROPOSED FIRST FLOOR PLAN. 1:100.

B	20/05/24	PLANNING SUBMISSION			RL
A	25/03/24	FIRST ISSUE FOR CLIENT COMMENTS			RL
Rev	Date	Revision			By

**ROBERT LAMB**  
Architectural Services Ltd

BURNSIDE STEADING, 24 SMALLHOLDINGS,  
BALMIE, ABERDEEN, AB23 3WU  
TEL/FAX: 01358 742771 MOB: 07766 106279  
E-Mail: robert.lamb6@btopenworld.com

Client		
The Huntly Arms Hotel Ltd		
Project		
Proposed replacement windows and doors to main hotel in existing building at Charlestown Road, Aboyne.		
Description		
Proposed first floor plan		
Project No	Drawing No	Amendment
THAH/24/01	PL006	B
Scale as shown @ A1	Date 18/03/24	Drawn By RGL
Computer File Ref	Checked By	Status PLANNING
© This drawing is the sole copyright of Robert Lamb and should not be copied or reproduced in any way without prior consent from Robert Lamb		